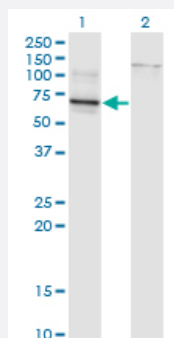


TBX22 monoclonal antibody (M01), clone 1A10

Catalog # H00050945-M01

Size 100 ug

Applications

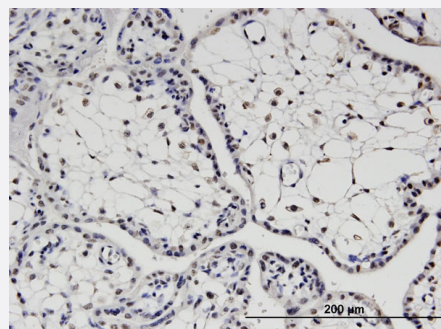


Western Blot (Transfected lysate)

Western Blot analysis of TBX22 expression in transfected 293T cell line by TBX22 monoclonal antibody (M01), clone 1A10.

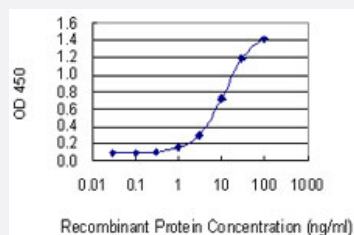
Lane 1: TBX22 transfected lysate (Predicted MW: 57.9 KDa).

Lane 2: Non-transfected lysate.



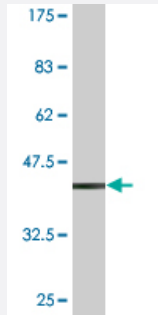
Immunohistochemistry (Formalin/PFA-fixed paraffin-embedded sections)

Immunoperoxidase of monoclonal antibody to TBX22 on formalin-fixed paraffin-embedded human placenta. [antibody concentration 1.5 ug/ml]



Sandwich ELISA (Recombinant protein)

Detection limit for recombinant GST tagged TBX22 is 0.3 ng/ml as a capture antibody.



Western Blot detection against Immunogen (35.53 KDa) .

Specification

Product Description	Mouse monoclonal antibody raised against a partial recombinant TBX22.
Immunogen	TBX22 (NP_058650, 431 a.a. ~ 519 a.a) partial recombinant protein with GST tag. MW of the GST tag alone is 26 KDa.
Sequence	DQYLQAPNSTNQMLYGLQSPGNIFLPNSITPEALSCSFHPSYDFYRYNFSMP SRLISGSNHLKVND DSQVSFGEGKCNH VHWYPAINHY
Host	Mouse
Reactivity	Human
Interspecies Antigen Sequence	Mouse (72); Rat (73)
Isotype	IgG2a Kappa
Quality Control Testing	Antibody Reactive Against Recombinant Protein. Western Blot detection against Immunogen (35.53 KDa) .
Storage Buffer	In 1x PBS, pH 7.4
Storage Instruction	Store at -20°C or lower. Aliquot to avoid repeated freezing and thawing.

Applications

● Western Blot (Transfected lysate)

Western Blot analysis of TBX22 expression in transfected 293T cell line by TBX22 monoclonal antibody (M01), clone 1A10.

Lane 1: TBX22 transfected lysate (Predicted MW: 57.9 KDa).

Lane 2: Non-transfected lysate.

[Protocol Download](#)

- Western Blot (Recombinant protein)

[Protocol Download](#)

- Immunohistochemistry (Formalin/PFA-fixed paraffin-embedded sections)

Immunoperoxidase of monoclonal antibody to TBX22 on formalin-fixed paraffin-embedded human placenta. [antibody concentration 1.5 ug/ml]

[Protocol Download](#)

- Sandwich ELISA (Recombinant protein)

Detection limit for recombinant GST tagged TBX22 is 0.3 ng/ml as a capture antibody.

[Protocol Download](#)

- ELISA

Gene Info — TBX22

Entrez GeneID [50945](#)

GeneBank Accession# [NM_016954](#)

Protein Accession# [NP_058650](#)

Gene Name TBX22

Gene Alias CLPA, TBXX, dJ795G23.1

Gene Description T-box 22

Omim ID [300307](#) [303400](#)

Gene Ontology [Hyperlink](#)

Gene Summary This gene is a member of a phylogenetically conserved family of genes that share a common DN A-binding domain, the T-box. T-box genes encode transcription factors involved in the regulation of developmental processes. Mutations in this gene have been associated with the inherited X-linked disorder, Cleft palate with ankyloglossia, and it is believed to play a major role in human palatogenesis. Alternatively spliced transcript variants encoding different isoforms have been found for this gene. [provided by RefSeq]

Other Designations OTTHUMP00000023602|OTTHUMP00000023603|OTTHUMP00000023604

Disease

- [Cleft Lip](#)
- [Cleft Palate](#)
- [Genetic Predisposition to Disease](#)