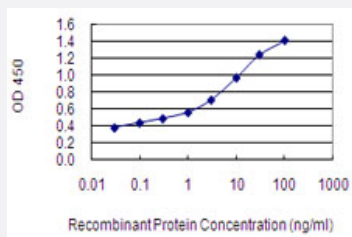


IMPG2 monoclonal antibody (M02), clone 3H5

Catalog # H00050939-M02

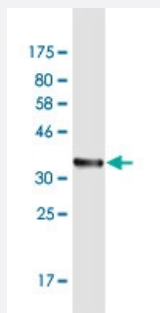
Size 100 ug

Applications



Sandwich ELISA (Recombinant protein)

Detection limit for recombinant GST tagged IMPG2 is 0.03 ng/ml as a capture antibody.



Western Blot detection against Immunogen (37.51 KDa) .

Specification

Product Description	Mouse monoclonal antibody raised against a partial recombinant IMPG2.
Immunogen	IMPG2 (NP_057331.2, 572 a.a. ~ 678 a.a) partial recombinant protein with GST tag. MW of the GST tag alone is 26 KDa.
Sequence	LTSKVKDQLKVSPFLPDASMEKELIFDGGLGSGSGQKVDLITWPWSETSSSEKSAEPLSKPWLED DDSLLPAEIEDKKLVLDKMDSTDQISKHSKYEHDDRSTHFPE
Host	Mouse
Reactivity	Human

Interspecies Antigen Sequence	Mouse (70); Rat (70)
Isotype	IgG2a Kappa
Quality Control Testing	Antibody Reactive Against Recombinant Protein. Western Blot detection against Immunogen (37.51 KDa) .
Storage Buffer	In 1x PBS, pH 7.4
Storage Instruction	Store at -20°C or lower. Aliquot to avoid repeated freezing and thawing.

Applications

- Western Blot (Recombinant protein)

[Protocol Download](#)

- Sandwich ELISA (Recombinant protein)

Detection limit for recombinant GST tagged IMPG2 is 0.03 ng/ml as a capture antibody.

[Protocol Download](#)

- ELISA

Gene Info — IMPG2

Entrez GeneID	50939
GeneBank Accession#	NM_016247
Protein Accession#	NP_057331.2
Gene Name	IMPG2
Gene Alias	IPM200, SPACRCAN
Gene Description	interphotoreceptor matrix proteoglycan 2
Omim ID	607056
Gene Ontology	Hyperlink

Gene Summary

Interphotoreceptor matrix proteoglycan-2 is part of an extracellular complex occupying the interface between photoreceptors and the retinal pigment epithelium in the fundus of the eye.[supplied by OMIM]

Other Designations

interphotoreceptor matrix proteoglycan 200