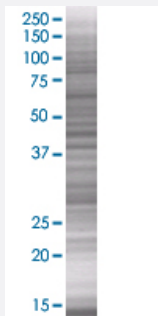


# CLEC4A 293T Cell Transient Overexpression Lysate(Denatured)

Catalog # H00050856-T01

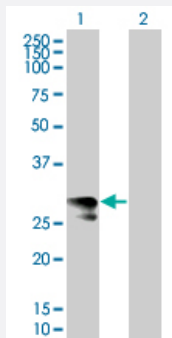
Size 100 uL

## Applications



### SDS-PAGE Gel

CLEC4A transfected lysate.



### Western Blot

Lane 1: CLEC4A transfected lysate ( 27.5 KDa)

Lane 2: Non-transfected lysate.

## Specification

Transfected Cell Line	293T
Plasmid	pCMV-CLEC4A full-length
Host	Human
Theoretical MW (kDa)	26.18
Interspecies Antigen Sequence	Mouse (53); Rat (53)

**Quality Control Testing**

Transient overexpression cell lysate was tested with Anti-CLEC4A antibody ([H00050856-B01](#)) by Western Blots.  
SDS-PAGE Gel  
CLEC4A transfected lysate.  
Western Blot  
Lane 1: CLEC4A transfected lysate ( 27.5 KDa)  
Lane 2: Non-transfected lysate.

**Storage Buffer**

1X Sample Buffer (50 mM Tris-HCl, 2% SDS, 10% glycerol, 300 mM 2-mercaptoethanol, 0.01% Bromophenol blue)

**Storage Instruction**

Store at -80°C. Aliquot to avoid repeated freezing and thawing.

## Applications

- Western Blot

## Gene Info — CLEC4A

**Entrez GeneID**[50856](#)**GeneBank Accession#**[NM\\_016184](#)**Protein Accession#**[NP\\_057268](#)**Gene Name**

CLEC4A

**Gene Alias**

CLECSF6, DCIR, DDB27, HDCGC13P, LLIR

**Gene Description**

C-type lectin domain family 4, member A

**Omim ID**[605306](#)**Gene Ontology**[Hyperlink](#)**Gene Summary**

This gene encodes a member of the C-type lectin/C-type lectin-like domain (CTL/CTLD) superfamily. Members of this family share a common protein fold and have diverse functions, such as cell adhesion, cell-cell signalling, glycoprotein turnover, and roles in inflammation and immune response. The encoded type 2 transmembrane protein may play a role in inflammatory and immune response. Multiple transcript variants encoding distinct isoforms have been identified for this gene. This gene is closely linked to other CTL/CTLD superfamily members on chromosome 12p13 in the natural killer gene complex region. [provided by RefSeq]

**Other Designations**

C-type (calcium dependent, carbohydrate-recognition domain) lectin, superfamily member 6|dendritic cell immunoreceptor|lectin-like immunoreceptor