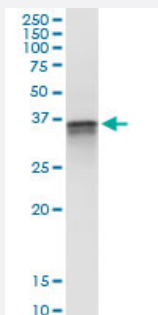


F11R (Human) IP-WB Antibody Pair

Catalog # H00050848-PW2

Size 1 Set

Applications



Immunoprecipitation of F11R transfected lysate using rabbit polyclonal anti-F11R and Protein A Magnetic Bead ([U0007](#)), and immunoblotted with mouse purified polyclonal anti-F11R.

Specification

Product Description	This IP-WB antibody pair set comes with one antibody for immunoprecipitation and another to detect the precipitated protein in western blot.
Reactivity	Human
Interspecies Antigen Sequence	Mouse (68); Rat (71)
Quality Control Testing	Immunoprecipitation-Western Blot (IP-WB) Immunoprecipitation of F11R transfected lysate using rabbit polyclonal anti-F11R and Protein A Magnetic Bead (U0007), and immunoblotted with mouse purified polyclonal anti-F11R.
Supplied Product	Antibody pair set content: 1. Antibody pair for IP: rabbit polyclonal anti-F11R (300 ul) 2. Antibody pair for WB: mouse purified polyclonal anti-F11R (50 ug)
Storage Instruction	Store reagents of the antibody pair set at -20°C or lower. Please aliquot to avoid repeated freeze thaw cycle. Reagents should be returned to -20°C storage immediately after use.

Applications

- Immunoprecipitation-Western Blot

[Protocol Download](#)

Gene Info — F11R

Entrez GeneID [50848](#)

Gene Name F11R

Gene Alias CD321, JAM, JAM-1, JAM-A, JAM1, JAMA, JCAM, KAT, PAM-1

Gene Description F11 receptor

Omim ID [605721](#)

Gene Ontology [Hyperlink](#)

Gene Summary Tight junctions represent one mode of cell-to-cell adhesion in epithelial or endothelial cell sheets, forming continuous seals around cells and serving as a physical barrier to prevent solutes and water from passing freely through the paracellular space. The protein encoded by this immunoglobulin superfamily gene member is an important regulator of tight junction assembly in epithelia. In addition, the encoded protein can act as (1) a receptor for reovirus, (2) a ligand for the integrin LFA1, involved in leukocyte transmigration, and (3) a platelet receptor. Multiple 5' alternatively spliced variants, encoding the same protein, have been identified but their biological validity has not been established. [provided by RefSeq]

Other Designations OTTHUMP00000027880|OTTHUMP00000027881|junctional adhesion molecule 1|junctional adhesion molecule A|platelet F11 receptor|platelet adhesion molecule

Pathway

- [Cell adhesion molecules \(CAMs\)](#)
- [Epithelial cell signaling in Helicobacter pylori infection](#)
- [Leukocyte transendothelial migration](#)
- [Tight junction](#)

Disease

- [Cardiovascular Diseases](#)

- [Diabetes Mellitus](#)
- [Edema](#)
- [Hypertension](#)
- [Obesity](#)