

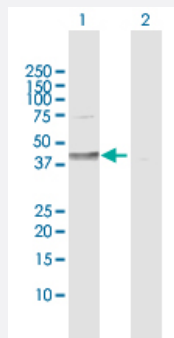
MaxPab®

DHH purified MaxPab rabbit polyclonal antibody (D01P)

Catalog # H00050846-D01P

Size 100 ug

Applications



Western Blot (Transfected lysate)

Western Blot analysis of DHH expression in transfected 293T cell line ([H00050846-T01](#)) by DHH MaxPab polyclonal antibody.

Lane 1: DHH transfected lysate(43.60 KDa).

Lane 2: Non-transfected lysate.

Specification

Product Description

Rabbit polyclonal antibody raised against a full-length human DHH protein.

Immunogen

DHH (NP_066382.1, 1 a.a. ~ 396 a.a) full-length human protein.

Sequence

MALLTNLLPLCCLALLALPAQSCGPGRGPGVRRRYARKQLVPLLYKQFVPGVPERTLGASGPAE
GRVARGSERFRDLVPNYPDIIFKDEENSGADRLMTERCKERVNALAIAMNMWPGVRLRVTEG
WDEDGHHQAQDSLHYEGRALDITTSRDRNKYGLLARLAVEAGFDWVYYESRNVHVSVKADNSL
AVRAGGCFPGNATVRLWSEGRKGLRELHRGDWVLAADASGRVVPVTPVLLFLDRDLQRRASFVA
VETEWPPRKLLLTPWHLVFAARGPAPAPGDFAPVFARRLRAGDSVLAPGGDALRPARVARVAR
EEAVGVFAPLTAHGTLVNDVLASCYAVLESHQWAHRAFAPLRLLHALGALLPGGAVQPTGMHW
YSRLLYRLAEELLG

Host

Rabbit

Reactivity

Human

Interspecies Antigen Sequence

Mouse (96); Rat (96)

Quality Control Testing

Antibody reactive against mammalian transfected lysate.

Storage Buffer

In 1x PBS, pH 7.4

Storage Instruction

Store at -20°C or lower. Aliquot to avoid repeated freezing and thawing.

Applications

- Western Blot (Transfected lysate)

Western Blot analysis of DHH expression in transfected 293T cell line ([H00050846-T01](#)) by DHH MaxPab polyclonal antibody.

Lane 1: DHH transfected lysate(43.60 KDa).

Lane 2: Non-transfected lysate.

[Protocol Download](#)

Gene Info — DHH

Entrez GeneID [50846](#)

GeneBank Accession# [NM_021044.2](#)

Protein Accession# [NP_066382.1](#)

Gene Name DHH

Gene Alias HHG-3, MGC35145

Gene Description desert hedgehog homolog (Drosophila)

Omim ID [605423 607080](#)

Gene Ontology [Hyperlink](#)

Gene Summary This gene encodes a member of the Hedgehog family. The hedgehog gene family encodes signaling molecules that play an important role in regulating morphogenesis. This protein is predicted to be made as a precursor that is autocatalytically cleaved; the N-terminal portion is soluble and contains the signalling activity while the C-terminal portion is involved in precursor processing. More importantly, the C-terminal product covalently attaches a cholesterol moiety to the N-terminal product, restricting the N-terminal product to the cell surface and preventing it from freely diffusing throughout the organism. Defects in this protein have been associated with partial gonadal dysgenesis (PGD) accompanied by minifascicular polyneuropathy. This protein may be involved in both male gonadal differentiation and perineurial development. [provided by RefSeq]

Other Designations desert hedgehog

Pathway

- [Hedgehog signaling pathway](#)