

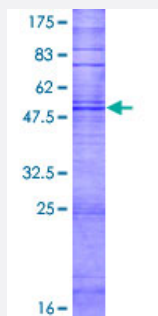
Full-Length

TAS2R16 (Human) Recombinant Protein (P01)

Catalog # H00050833-P01

Size 25 ug, 10 ug

Applications



Specification

Product Description

Human TAS2R16 full-length ORF (NP_058641.1, 1 a.a. - 291 a.a.) recombinant protein with GST-tag at N-terminal.

Sequence

MIPIQLTVFFMIYVLESLLTIQSSLIYAVLGREWLQVRRLLMPVDMILISLGISRFCLQWASMLNNFCS
 YFNLNYVLCNLTITWEFFNLTFWLNSLLTVFYCIKVSSFTHHIFLWLRWRILRLFPWILLGSLMITCVTII
 PSAIGNYQIQLLTMEHLPRNSTVTDKLENFHQYQFQAHTVALVIPFILFLASTIFLMASLTKQIQHHST
 GHCNPSMKARFTALRSLAVLFVFTSYFLTITITIGTLFDKRCWLWWWEAFVYAFILMHSTSLMLSSP
 TLKRILKGKC

Host

Wheat Germ (in vitro)

Theoretical MW (kDa)

60.4

Preparation Method

[in vitro wheat germ expression system](#)

Purification

Glutathione Sepharose 4 Fast Flow

Quality Control Testing

12.5% SDS-PAGE Stained with Coomassie Blue.

Storage Buffer

50 mM Tris-HCl, 10 mM reduced Glutathione, pH=8.0 in the elution buffer.

Storage Instruction

Store at -80°C. Aliquot to avoid repeated freezing and thawing.

Note

Best use within three months from the date of receipt of this protein.

Applications

- Enzyme-linked Immunoabsorbent Assay
- Western Blot (Recombinant protein)
- Antibody Production
- Protein Array

Gene Info — TAS2R16

Entrez GeneID [50833](#)

GeneBank Accession# [NM_016945.2](#)

Protein Accession# [NP_058641.1](#)

Gene Name TAS2R16

Gene Alias T2R16

Gene Description taste receptor, type 2, member 16

Omim ID [604867](#)

Gene Ontology [Hyperlink](#)

Gene Summary This gene encodes a member of a family of candidate taste receptors that are members of the G protein-coupled receptor superfamily. These family members are specifically expressed by taste receptor cells of the tongue and palate epithelia. Each of these apparently intronless genes encodes a 7-transmembrane receptor protein, functioning as a bitter taste receptor. This gene is clustered with another 3 candidate taste receptor genes in chromosome 7 and is genetically linked to loci that influence bitter perception. [provided by RefSeq]

Other Designations candidate taste receptor T2R16|taste receptor T2R16

Pathway

- [Taste transduction](#)

Disease

- [Alcoholism](#)
- [Taste](#)
- [Tobacco Use Disorder](#)