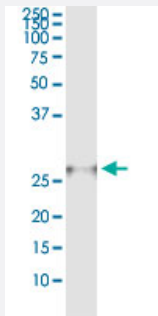


# AK3 (Human) IP-WB Antibody Pair

Catalog # H00050808-PW2

Size 1 Set

## Applications



Immunoprecipitation of AK3 transfected lysate using rabbit polyclonal anti-AK3 and Protein A Magnetic Bead ([U0007](#)), and immunoblotted with mouse purified polyclonal anti-AK3.

## Specification

<b>Product Description</b>	This IP-WB antibody pair set comes with one antibody for immunoprecipitation and another to detect the precipitated protein in western blot.
<b>Reactivity</b>	Human
<b>Interspecies Antigen Sequence</b>	Mouse (92); Rat (90)
<b>Quality Control Testing</b>	Immunoprecipitation-Western Blot (IP-WB) Immunoprecipitation of AK3 transfected lysate using rabbit polyclonal anti-AK3 and Protein A Magnetic Bead ( <a href="#">U0007</a> ), and immunoblotted with mouse purified polyclonal anti-AK3.
<b>Supplied Product</b>	Antibody pair set content: 1. Antibody pair for IP: rabbit polyclonal anti-AK3 (300 ul) 2. Antibody pair for WB: mouse purified polyclonal anti-AK3 (50 ug)
<b>Storage Instruction</b>	Store reagents of the antibody pair set at -20°C or lower. Please aliquot to avoid repeated freeze thaw cycle. Reagents should be returned to -20°C storage immediately after use.

## Applications

- Immunoprecipitation-Western Blot

[Protocol Download](#)

## Gene Info — AK3

Entrez GeneID	<a href="#">50808</a>
Gene Name	AK3
Gene Alias	AK3L1, AK6, AKL3L, AKL3L1, FIX
Gene Description	adenylate kinase 3
Omim ID	<a href="#">609290</a>
Gene Ontology	<a href="#">Hyperlink</a>
Gene Summary	adenylate kinase 3 like 1
Other Designations	OTTHUMP00000021016 adenylate kinase 3 alpha like adenylate kinase 3 like 1 adenylate kinase 6, adenylate kinase 3 like 1

## Pathway

- [Pyrimidine metabolism](#)