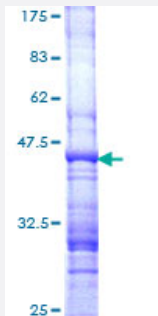


ARHGEF3 (Human) Recombinant Protein (Q01)

Catalog # H00050650-Q01

Size 25 ug, 10 ug

Applications



Specification

Product Description	Human ARHGEF3 partial ORF (NP_062455, 33 a.a. - 142 a.a.) recombinant protein with GST-tag at N-terminal.
Sequence	EPSNKRVKPLSRVTSANLIPPVKATPLKRFSQTLQRSISFRSESRPDILAPRPWSRNAAPSSTKR RDSKLWSETFDVCVNQMLTSKEIKRQEAIFELSQGEEDLIEDLK
Host	Wheat Germ (in vitro)
Theoretical MW (kDa)	37.84
Interspecies Antigen Sequence	Mouse (94); Rat (94)
Preparation Method	in vitro wheat germ expression system
Purification	Glutathione Sepharose 4 Fast Flow
Quality Control Testing	12.5% SDS-PAGE Stained with Coomassie Blue.
Storage Buffer	50 mM Tris-HCl, 10 mM reduced Glutathione, pH=8.0 in the elution buffer.
Storage Instruction	Store at -80°C. Aliquot to avoid repeated freezing and thawing.
Note	Best use within three months from the date of receipt of this protein.

Applications

- Enzyme-linked Immunoabsorbent Assay
- Western Blot (Recombinant protein)
- Antibody Production
- Protein Array

Gene Info — ARHGEF3

Entrez GeneID [50650](#)

GeneBank Accession# [NM_019555](#)

Protein Accession# [NP_062455](#)

Gene Name ARHGEF3

Gene Alias DKFZp434F2429, FLJ98126, GEF3, MGC118905, STA3, XPLN

Gene Description Rho guanine nucleotide exchange factor (GEF) 3

Gene Ontology [Hyperlink](#)

Gene Summary Rho-like GTPases are involved in a variety of cellular processes, and they are activated by binding GTP and inactivated by conversion of GTP to GDP by their intrinsic GTPase activity. Guanine nucleotide exchange factors (GEFs) accelerate the GTPase activity of Rho GTPases by catalyzing their release of bound GDP. This gene encodes a guanine nucleotide exchange factor, which specifically activates two members of the Rho GTPase family: RHOA and RHOB, both of which have a role in bone cell biology. It has been identified that genetic variation in this gene plays a role in the determination of bone mineral density (BMD), indicating the implication of this gene in postmenopausal osteoporosis. Alternatively spliced transcript variants encoding different isoforms have been found for this gene. [provided by RefSeq]

Other Designations 59.8 kDa protein|Rho guanine nucleotide exchange factor 3|RhoGEF protein|exchange factor found in platelets and leukemic and neuronal tissues, XPLN

Disease

- [Angina Pectoris](#)
- [Coronary Vasospasm](#)

- [Genetic Predisposition to Disease](#)
- [Osteoporosis](#)
- [Tobacco Use Disorder](#)