

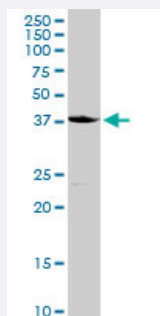
MaxPab®

CD207 purified MaxPab rabbit polyclonal antibody (D01P)

Catalog # H00050489-D01P

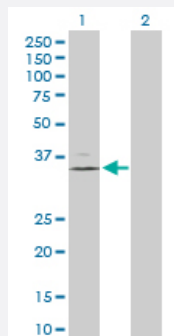
Size 100 ug

Applications



Western Blot (Tissue lysate)

CD207 MaxPab rabbit polyclonal antibody. Western Blot analysis of CD207 expression in mouse lung.



Western Blot (Transfected lysate)

Western Blot analysis of CD207 expression in transfected 293T cell line ([H00050489-T03](#)) by CD207 MaxPab polyclonal antibody.

Lane 1: CD207 transfected lysate(36.70 KDa).

Lane 2: Non-transfected lysate.

Specification

Product Description

Rabbit polyclonal antibody raised against a full-length human CD207 protein.

Immunogen

CD207 (AAH22278.1, 1 a.a. ~ 328 a.a) full-length human protein.

Sequence

MTVEKEAPDAHFTVDKQNISLWPREPPPKSGPSLVPGKTPTVRAALICLTLLVASVLLQAVLYPR
FMGTISDVKTNVQLLKGRVDNISTLDSEIKKNSDGMEAAGVQIQMVNESLGYVRSQFLKLKTSVEK
ANAIQILTRSWEEVSTLNAIQIPELKSDLEKASALNTKIRALQGSLENMSKLLKRQNDILQVVSQGW
KYFKGNFYFSLIPKTWYSAEQFCVSRNSHLTSVTSESEQEFLYKTAGGLIYWIGLTKAGMEGDWS
WVDDTPFNKVQSARFWIPGEPNAGNNEHCGNIKAPSLQAWNDAPCDKTLFICKRPYVPSEP

Host

Rabbit

Reactivity	Human, Mouse
Interspecies Antigen Sequence	Mouse (67); Rat (64)
Quality Control Testing	Antibody reactive against mammalian transfected lysate.
Storage Buffer	In 1x PBS, pH 7.4
Storage Instruction	Store at -20°C or lower. Aliquot to avoid repeated freezing and thawing.

Applications

- Western Blot (Tissue lysate)

CD207 MaxPab rabbit polyclonal antibody. Western Blot analysis of CD207 expression in mouse lung.

[Protocol Download](#)

- Western Blot (Transfected lysate)

Western Blot analysis of CD207 expression in transfected 293T cell line ([H00050489-T03](#)) by CD207 MaxPab polyclonal antibody.

Lane 1: CD207 transfected lysate(36.70 KDa).

Lane 2: Non-transfected lysate.

[Protocol Download](#)

Gene Info — CD207

Entrez GeneID	50489
GeneBank Accession#	BC022278.1
Protein Accession#	AAH22278.1
Gene Name	CD207
Gene Alias	CLEC4K
Gene Description	CD207 molecule, langerin
Omim ID	604862
Gene Ontology	Hyperlink

Gene Summary

The protein encoded by this gene is expressed only in Langerhans cells which are immature dendritic cells of the epidermis and mucosa. It is localized in the Birbeck granules, organelles present in the cytoplasm of Langerhans cells and consisting of superimposed and zippered membranes. It is a C-type lectin with mannose binding specificity, and it has been proposed that mannose binding by this protein leads to internalization of antigen into Birbeck granules and providing access to a nonclassical antigen-processing pathway. [provided by RefSeq]

Other Designations

C-type lectin domain family 4, member K|CD207 antigen, langerin|Langerhans cell specific c-type lectin