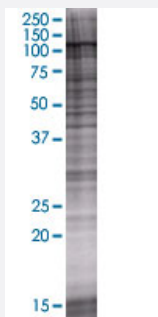


# SMARCAL1 293T Cell Transient Overexpression Lysate(Denatured)

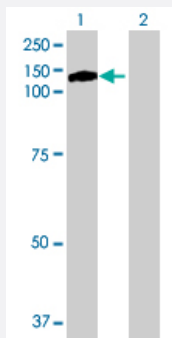
Catalog # H00050485-T01      Size 100 uL

## Applications



### SDS-PAGE Gel

SMARCAL1 transfected lysate.



### Western Blot

Lane 1: SMARCAL1 transfected lysate ( 105.05 KDa)

Lane 2: Non-transfected lysate.

## Specification

Transfected Cell Line	293T
Plasmid	pCMV-SMARCAL1 full-length
Host	Human
Theoretical MW (kDa)	105.05
Interspecies Antigen Sequence	Mouse (71); Rat (73)

**Quality Control Testing**

Transient overexpression cell lysate was tested with Anti-SMARCAL1 antibody ([H00050485-B01](#)) by Western Blots.  
SDS-PAGE Gel  
SMARCAL1 transfected lysate.  
Western Blot  
Lane 1: SMARCAL1 transfected lysate ( 105.05 KDa)  
Lane 2: Non-transfected lysate.

**Storage Buffer**

1X Sample Buffer (50 mM Tris-HCl, 2% SDS, 10% glycerol, 300 mM 2-mercaptoethanol, 0.01% Bromophenol blue)

**Storage Instruction**

Store at -80°C. Aliquot to avoid repeated freezing and thawing.

## Applications

- Western Blot

## Gene Info — SMARCAL1

**Entrez GeneID**[50485](#)**GeneBank Accession#**[NM\\_014140.2](#)**Protein Accession#**[NP\\_054859.2](#)**Gene Name**

SMARCAL1

**Gene Alias**

HARP, HHARP

**Gene Description**

SWI/SNF related, matrix associated, actin dependent regulator of chromatin, subfamily a-like 1

**Omim ID**[242900 606622](#)**Gene Ontology**[Hyperlink](#)**Gene Summary**

The protein encoded by this gene is a member of the SWI/SNF family of proteins. Members of this family have helicase and ATPase activities and are thought to regulate transcription of certain genes by altering the chromatin structure around those genes. The encoded protein shows sequence similarity to the E. coli RNA polymerase-binding protein HepA. Mutations in this gene are a cause of Schimke immunoosseous dysplasia (SIOD), an autosomal recessive disorder with the diagnostic features of spondyloepiphyseal dysplasia, renal dysfunction, and T-cell immunodeficiency. [provided by RefSeq]

**Other Designations**

HepA-related protein|OTTHUMP00000164057|SMARCA-like protein 1|SWI/SNF-related matrix-associated actin-dependent regulator of chromatin a-like 1

## Disease

- [Tobacco Use Disorder](#)