

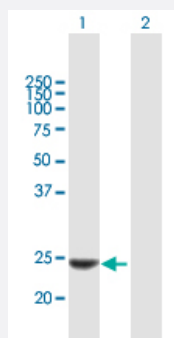
MaxPab®

# KLK14 purified MaxPab mouse polyclonal antibody (B01P)

Catalog # H00043847-B01P

Size 50 ug

## Applications



### Western Blot (Transfected lysate)

Western Blot analysis of KLK14 expression in transfected 293T cell line ([H00043847-T01](#)) by KLK14 MaxPab polyclonal antibody.

Lane 1: KLK14 transfected lysate(27.61 KDa).

Lane 2: Non-transfected lysate.

## Specification

Product Description	Mouse polyclonal antibody raised against a full-length human KLK14 protein.
Immunogen	KLK14 (ENSP00000156499, 1 a.a. ~ 251 a.a) full-length human protein.
Sequence	MFLLLTALQVLAIAMTQSQEDENKIIGGHTCTRSSQPWQAALLAGPRRRFLCGGALLSGQWVITAA HCGRPILQVALGKHNLRRWEATQQVLRVVRQVTHPNYNSRTHDNDLMLLQLQQPARIGRAVRPIE VTQACASPGTSCRVSQGWGTISSPIARYPASLQCVNINISPDEVQKAYPRTITPGMVCAGVPQGG KDSCQGDSSGGLVCRGQLQGLVSWGMERCALPGYPGVYTNLCKYRSWIEETMRDK
Host	Mouse
Reactivity	Human
Interspecies Antigen Sequence	Mouse (73); Rat (75)
Quality Control Testing	Antibody reactive against mammalian transfected lysate.
Storage Buffer	In 1x PBS, pH 7.4
Storage Instruction	Store at -20°C or lower. Aliquot to avoid repeated freezing and thawing.

## Applications

- Western Blot (Transfected lysate)

Western Blot analysis of KLK14 expression in transfected 293T cell line ([H00043847-T01](#)) by KLK14 MaxPab polyclonal antibody.

Lane 1: KLK14 transfected lysate(27.61 KDa).

Lane 2: Non-transfected lysate.

[Protocol Download](#)

## Gene Info — KLK14

Entrez GeneID	<a href="#">43847</a>
---------------	-----------------------

GeneBank Accession#	<a href="#">ENST00000156499</a>
---------------------	---------------------------------

Protein Accession#	<a href="#">ENSP00000156499</a>
--------------------	---------------------------------

Gene Name	KLK14
-----------	-------

Gene Alias	KLK-L6
------------	--------

Gene Description	kallikrein-related peptidase 14
------------------	---------------------------------

Omim ID	<a href="#">606135</a>
---------	------------------------

Gene Ontology	<a href="#">Hyperlink</a>
---------------	---------------------------

Gene Summary	Kallikreins are a subgroup of serine proteases having diverse physiological functions. Growing evidence suggests that many kallikreins are implicated in carcinogenesis and some have potential as novel cancer and other disease biomarkers. This gene is one of the fifteen kallikrein subfamily members located in a cluster on chromosome 19. An additional transcript variant has been described but its full length nature has not been determined. [provided by RefSeq]
--------------	--

Other Designations	OTTHUMP00000184888 kallikrein 14 kallikrein-like protein 6
--------------------	--

## Disease

- [Genetic Predisposition to Disease](#)
- [Prostatic Neoplasms](#)