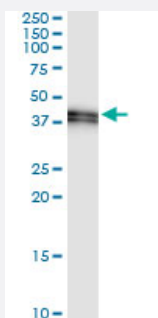


STOML2 (Human) IP-WB Antibody Pair

Catalog # H00030968-PW1

Size 1 Set

Applications



Immunoprecipitation of STOML2 transfected lysate using rabbit polyclonal anti-STOML2 and Protein A Magnetic Bead ([U0007](#)), and immunoblotted with mouse purified polyclonal anti-STOML2.

Specification

Product Description	This IP-WB antibody pair set comes with one antibody for immunoprecipitation and another to detect the precipitated protein in western blot.
Reactivity	Human
Interspecies Antigen Sequence	Mouse (93); Rat (93)
Quality Control Testing	Immunoprecipitation-Western Blot (IP-WB) Immunoprecipitation of STOML2 transfected lysate using rabbit polyclonal anti-STOML2 and Protein A Magnetic Bead (U0007), and immunoblotted with mouse purified polyclonal anti-STOML2.
Supplied Product	Antibody pair set content: 1. Antibody pair for IP: rabbit polyclonal anti-STOML2 (300 ul) 2. Antibody pair for WB: mouse purified polyclonal anti-STOML2 (50 ug)
Storage Instruction	Store reagents of the antibody pair set at -20°C or lower. Please aliquot to avoid repeated freeze thaw cycle. Reagents should be returned to -20°C storage immediately after use.

Applications

- Immunoprecipitation-Western Blot

[Protocol Download](#)

Gene Info — STOML2

Entrez GeneID	30968
---------------	-----------------------

Gene Name	STOML2
-----------	--------

Gene Alias	HSPC108, SLP-2
------------	----------------

Gene Description	stomatin (EPB72)-like 2
------------------	-------------------------

Omim ID	608292
---------	------------------------

Gene Ontology	Hyperlink
---------------	---------------------------

Other Designations	OTTHUMP00000021320 stomatin-like 2 stomatin-like protein 2
--------------------	--