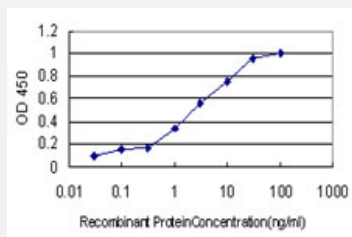


TAX1BP3 monoclonal antibody (M01), clone 4A10

Catalog # H00030851-M01

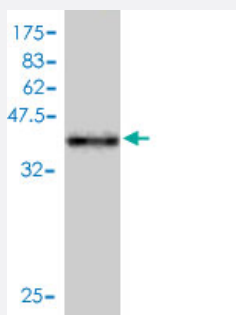
Size 100 ug

Applications



Sandwich ELISA (Recombinant protein)

Detection limit for recombinant GST tagged TAX1BP3 is approximately 0.1ng/ml as a capture antibody.



Western Blot detection against Immunogen (39.38 KDa) .

Specification

Product Description	Mouse monoclonal antibody raised against a full length recombinant TAX1BP3.
Immunogen	TAX1BP3 (AAH23980, 1 a.a. ~ 124 a.a) full-length recombinant protein with GST tag. MW of the GST tag alone is 26 KDa.
Sequence	MSYIPGQPVTAVVQRVEIHKLRQGENLILGFSIGGGIDQDPSQNPFSSEDKTDKGMVTRVSEGGPAE IAGLQIGDKIMQVNGWDMTMVTHDQARKRLTKRSEEVVRLLVTRQSLQKAVQQSMLS
Host	Mouse
Reactivity	Human
Isotype	IgG1 kappa

Quality Control Testing	Antibody Reactive Against Recombinant Protein. Western Blot detection against Immunogen (39.38 KDa) .
Storage Buffer	In 1x PBS, pH 7.4
Storage Instruction	Store at -20°C or lower. Aliquot to avoid repeated freezing and thawing.

Applications

- Western Blot (Recombinant protein)

[Protocol Download](#)

- Sandwich ELISA (Recombinant protein)

Detection limit for recombinant GST tagged TAX1BP3 is approximately 0.1ng/ml as a capture antibody.

[Protocol Download](#)

- ELISA

Gene Info — TAX1BP3

Entrez GeneID	30851
GeneBank Accession#	BC023980
Protein Accession#	AAH23980
Gene Name	TAX1BP3
Gene Alias	TIP-1
Gene Description	Tax1 (human T-cell leukemia virus type I) binding protein 3
Gene Ontology	Hyperlink
Other Designations	Tax interaction protein 1

Publication Reference

- [The HPV16 E6 binding protein Tip-1 interacts with ARHGEF16, which activates Cdc42.](#)

Oliver AW, He X, Borthwick K, Donne AJ, Hampson L, Hampson IN.

British Journal of Cancer 2011 Jan; 104(2):324.

Application: WB, Human, C33A, C33AV, C33AT16 E6 and C33AT6 E6 cells