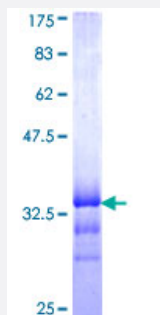


EHD2 (Human) Recombinant Protein (Q01)

Catalog # H00030846-Q01

Size 25 ug, 10 ug

Applications



Specification

| | |
|-------------------------------|--|
| Product Description | Human EHD2 partial ORF (NP_055416, 365 a.a. - 427 a.a.) recombinant protein with GST-tag at N-terminal. |
| Sequence | AHDFTKFHSLKPKLLEALDEMLTHDIAKLMPLLRQEELESTEVG VQGGA FEGTHMGPFVERGP |
| Host | Wheat Germ (in vitro) |
| Theoretical MW (kDa) | 32.67 |
| Interspecies Antigen Sequence | Mouse (96); Rat (97) |
| Preparation Method | in vitro wheat germ expression system |
| Purification | Glutathione Sepharose 4 Fast Flow |
| Quality Control Testing | 12.5% SDS-PAGE Stained with Coomassie Blue. |
| Storage Buffer | 50 mM Tris-HCl, 10 mM reduced Glutathione, pH=8.0 in the elution buffer. |
| Storage Instruction | Store at -80°C. Aliquot to avoid repeated freezing and thawing. |
| Note | Best use within three months from the date of receipt of this protein. |

Applications

- Enzyme-linked Immunoabsorbent Assay
- Western Blot (Recombinant protein)
- Antibody Production
- Protein Array

Gene Info — EHD2

Entrez GeneID [30846](#)

GeneBank Accession# [NM_014601](#)

Protein Accession# [NP_055416](#)

Gene Name EHD2

Gene Alias FLJ96617, PAST2

Gene Description EH-domain containing 2

Omim ID [605890](#)

Gene Ontology [Hyperlink](#)

Gene Summary This gene encodes a member of the EH domain-containing protein family. These proteins are characterized by a C-terminal EF-hand domain, a nucleotide-binding consensus site at the N terminus and a bipartite nuclear localization signal. The encoded protein interacts with the actin cytoskeleton through an N-terminal domain and also binds to an EH domain-binding protein through the C-terminal EH domain. This interaction appears to connect clathrin-dependent endocytosis to actin, suggesting that this gene product participates in the endocytic pathway. [provided by RefSeq]

Other Designations EH domain containing 2

Pathway

- [Endocytosis](#)