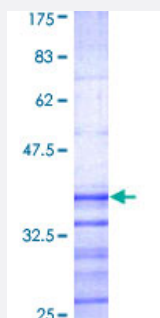


# KCNIP2 (Human) Recombinant Protein (Q01)

Catalog # H00030819-Q01

Size 25 ug, 10 ug

## Applications



## Specification

<b>Product Description</b>	Human KCNIP2 partial ORF ( AAH34685, 1 a.a. - 100 a.a.) recombinant protein with GST-tag at N-terminal.
<b>Sequence</b>	MRGQGRKESLSDSRDL DGSYDQLTGHP PGPTKKALKQRFLKLLPCCGPQALPSVSENSVDDEF ELSTVCHRPEGLEQLQEQT K FTRKELQVLYRGFKNEC
<b>Host</b>	Wheat Germ (in vitro)
<b>Theoretical MW (kDa)</b>	36.63
<b>Preparation Method</b>	<a href="#">in vitro wheat germ expression system</a>
<b>Purification</b>	Glutathione Sepharose 4 Fast Flow
<b>Quality Control Testing</b>	12.5% SDS-PAGE Stained with Coomassie Blue.
<b>Storage Buffer</b>	50 mM Tris-HCl, 10 mM reduced Glutathione, pH=8.0 in the elution buffer.
<b>Storage Instruction</b>	Store at -80°C. Aliquot to avoid repeated freezing and thawing.
<b>Note</b>	Best use within three months from the date of receipt of this protein.

## Applications

- Enzyme-linked Immunoabsorbent Assay
- Western Blot (Recombinant protein)
- Antibody Production
- Protein Array

## Gene Info — KCNIP2

Entrez GeneID [30819](#)

GeneBank Accession# [BC034685](#)

Protein Accession# [AAH34685](#)

Gene Name KCNIP2

Gene Alias DKFZp566L1246, KCHIP2, MGC17241

Gene Description Kv channel interacting protein 2

Omim ID [604661](#)

Gene Ontology [Hyperlink](#)

**Gene Summary** This gene encodes a member of the family of voltage-gated potassium (Kv) channel-interacting proteins (KCNIPs), which belongs to the recoverin branch of the EF-hand superfamily. Members of the KCNIP family are small calcium binding proteins. They all have EF-hand-like domains, and differ from each other in the N-terminus. They are integral subunit components of native Kv4 channel complexes. They may regulate A-type currents, and hence neuronal excitability, in response to changes in intracellular calcium. Multiple alternatively spliced transcript variants encoding distinct isoforms have been identified from this gene. [provided by RefSeq]

**Other Designations** A-type potassium channel modulatory protein 2|Kv channel-interacting protein 2|OTTHUMP00000020332|OTTHUMP00000020333|OTTHUMP00000020336|OTTHUMP00000020337|OTTHUMP00000020339|OTTHUMP00000020340|cardiac voltage gated potassium channel modulatory subunit|pot

## Disease

- [Alzheimer Disease](#)

- [Genetic Predisposition to Disease](#)