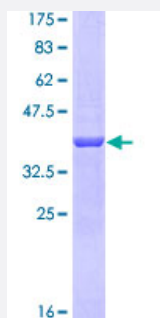


# ERVWE1 (Human) Recombinant Protein (Q01)

Catalog # H00030816-Q01

Size 25 ug, 10 ug

## Applications



## Specification

|                                |  |
|--------------------------------|--|
| <b>Product Description</b>     | Human ERVWE1 partial ORF ( NP_055405, 116 a.a. - 215 a.a.) recombinant protein with GST-tag at N-terminal. |
| <b>Sequence</b>                | DGGGVQDQAREKHHVKEVISQLTRVHGTSSPYKGLDLSKLHETLRTHTRLVSLFNTTLTGLHEVSAQNPNTNCWICLPLNFRPYVSIPVPEQWNNFSTEINT     |
| <b>Host</b>                    | Wheat Germ (in vitro)  |
| <b>Theoretical MW (kDa)</b>    | 36.74  |
| <b>Preparation Method</b>      | <a href="#">in vitro wheat germ expression system</a>  |
| <b>Purification</b>            | Glutathione Sepharose 4 Fast Flow  |
| <b>Quality Control Testing</b> | 12.5% SDS-PAGE Stained with Coomassie Blue.  |
| <b>Storage Buffer</b>          | 50 mM Tris-HCl, 10 mM reduced Glutathione, pH=8.0 in the elution buffer.                                   |
| <b>Storage Instruction</b>     | Store at -80°C. Aliquot to avoid repeated freezing and thawing.  |
| <b>Note</b>                    | Best use within three months from the date of receipt of this protein.                                     |

## Applications

- Enzyme-linked Immunoabsorbent Assay
- Western Blot (Recombinant protein)
- Antibody Production
- Protein Array

## Gene Info — ERVWE1

**Entrez GeneID** [30816](#)

**GeneBank Accession#** [NM\\_014590](#)

**Protein Accession#** [NP\\_055405](#)

**Gene Name** ERVWE1

**Gene Alias** Env-W, HERV-7q, HERV-W, HERV-W-ENV, HERVW, env, syncytin

**Gene Description** endogenous retroviral family W, env(C7), member 1

**Omim ID** [604659](#)

**Gene Ontology** [Hyperlink](#)

**Gene Summary** Many different human endogenous retrovirus (HERV) families are expressed in normal placental tissue at high levels, suggesting that HERVs are functionally important in reproduction. This gene is part of an HERV provirus on chromosome 7 that has inactivating mutations in the gag and pol genes. This gene is the envelope glycoprotein gene which appears to have been selectively preserved. The product of this gene, syncytin, is expressed in the placental syncytiotrophoblast and is involved in fusion of the cytotrophoblast cells to form the syncytial layer of the placenta. The protein has the characteristics of a typical retroviral envelope protein, including a furin cleavage site that separates the surface (SU) and transmembrane (TM) proteins which form a heterodimer. Alternatively spliced transcript variants encoding the same protein have been found for this gene. [provided by RefSeq]

**Other Designations** HERV-7q envelope protein|HERV-W Env glycoprotein|HERV-W{7q21.1} provirus ancestral Env polyprotein|HERV-tryptophan envelope protein|OTTHUMP00000161914|envelope glycoprotein|envelope protein|enverin|syncytin|syncytin-1

## Publication Reference

- [Immune cell activation by trophoblast-derived microvesicles is mediated by syncytin 1.](#)

Holder BS, Tower CL, Forbes K, Mulla MJ, Aplin JD, Abrahams VM.

Immunology 2012 Jun; 136(2):184.

Application: Func, Recombinant protein

## Disease

- [Diabetes Mellitus](#)