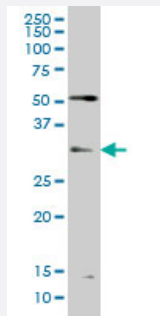


TLX3 monoclonal antibody (M01), clone 2A3

Catalog # H00030012-M01

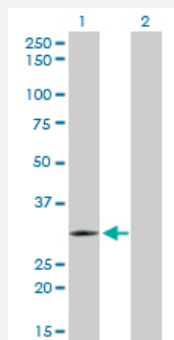
Size 100 ug

Applications



Western Blot (Cell lysate)

TLX3 monoclonal antibody (M01), clone 2A3 Western Blot analysis of TLX3 expression in MCF-7 (Cat # L046V1).

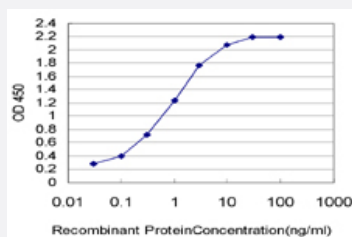


Western Blot (Transfected lysate)

Western Blot analysis of TLX3 expression in transfected 293T cell line by TLX3 monoclonal antibody (M01), clone 2A3.

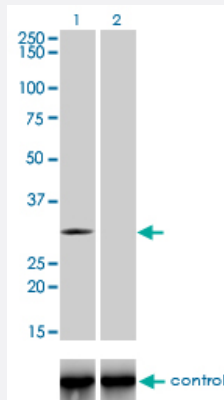
Lane 1: TLX3 transfected lysate(31.9 KDa).

Lane 2: Non-transfected lysate.



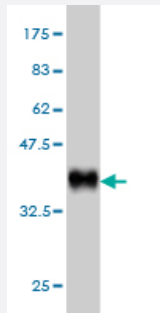
Sandwich ELISA (Recombinant protein)

Detection limit for recombinant GST tagged TLX3 is approximately 0.03ng/ml as a capture antibody.



RNAi Knockdown (Antibody validated)

Western blot analysis of TLX3 over-expressed 293 cell line, cotransfected with TLX3 Validated Chimera RNAi (Cat # H00030012-R01V) (Lane 2) or non-transfected control (Lane 1). Blot probed with TLX3 monoclonal antibody (M01), clone 2A3 (Cat # H00030012-M01). GAPDH (36.1 kDa) used as specificity and loading control.



Western Blot detection against Immunogen (36.74 KDa) .

Specification

Product Description	Mouse monoclonal antibody raised against a partial recombinant TLX3.
Immunogen	TLX3 (NP_066305, 192 a.a. ~ 291 a.a) partial recombinant protein with GST tag. MW of the GST tag alone is 26 KDa.
Sequence	ASAERAALAKSLKMTDAQVKTWFQNRRTKWRRQTAEEREAEERQQASRLMLQLQHDAFQKSLN DSIQPDPLCLHNSSLFALQNLQPWEEDSSKVPVAVTSLV
Host	Mouse
Reactivity	Human
Interspecies Antigen Sequence	Mouse (100); Rat (100)
Isotype	IgG1 Kappa
Quality Control Testing	Antibody Reactive Against Recombinant Protein. Western Blot detection against Immunogen (36.74 KDa) .
Storage Buffer	In 1x PBS, pH 7.4
Storage Instruction	Store at -20°C or lower. Aliquot to avoid repeated freezing and thawing.

Applications

- Western Blot (Cell lysate)

TLX3 monoclonal antibody (M01), clone 2A3 Western Blot analysis of TLX3 expression in MCF-7 (Cat # L046V1).

[Protocol Download](#)

- Western Blot (Transfected lysate)

Western Blot analysis of TLX3 expression in transfected 293T cell line by TLX3 monoclonal antibody (M01), clone 2A3.

Lane 1: TLX3 transfected lysate(31.9 KDa).

Lane 2: Non-transfected lysate.

[Protocol Download](#)

- Western Blot (Recombinant protein)

[Protocol Download](#)

- Sandwich ELISA (Recombinant protein)

Detection limit for recombinant GST tagged TLX3 is approximately 0.03ng/ml as a capture antibody.

[Protocol Download](#)

- ELISA

- RNAi Knockdown (Antibody validated)

Western blot analysis of TLX3 over-expressed 293 cell line, cotransfected with TLX3 Validated Chimera RNAi (Cat # H00030012-R01V) (Lane 2) or non-transfected control (Lane 1). Blot probed with TLX3 monoclonal antibody (M01), clone 2A3 (Cat # H00030012-M01). GAPDH (36.1 kDa) used as specificity and loading control.

[Protocol Download](#)

Gene Info — TLX3

Entrez GeneID [30012](#)

GeneBank Accession# [NM_021025](#)

Protein Accession# [NP_066305](#)

Gene Name TLX3

Gene Alias HOX11L2, MGC29804, RNX

Gene Description	T-cell leukemia homeobox 3
Omim ID	604640
Gene Ontology	Hyperlink
Gene Summary	RNX (HOX11L2, TLX3) belongs to a family of orphan homeobox genes that encode DNA-binding nuclear transcription factors. Members of the HOX11 gene family are characterized by a threonine-47 replacing cytosine in the highly conserved homeodomain (Dear et al., 1993 [PubMed 8099440]).[supplied by OMIM]
Other Designations	T-cell leukemia, homeobox 3 homeobox 11-like 2

Disease

- [Sudden Infant Death](#)