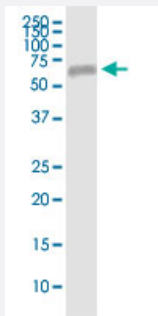


EFEMP2 (Human) IP-WB Antibody Pair

Catalog # H00030008-PW3

Size 1 Set

Applications



Immunoprecipitation of EFEMP2 transfected lysate using rabbit polyclonal anti-EFEMP2 and Protein A Magnetic Bead ([U0007](#)), and immunoblotted with mouse purified polyclonal anti-EFEMP2.

Specification

Product Description	This IP-WB antibody pair set comes with one antibody for immunoprecipitation and another to detect the precipitated protein in western blot.
Reactivity	Human
Interspecies Antigen Sequence	Mouse (95%); Rat (96%)
Quality Control Testing	Immunoprecipitation-Western Blot (IP-WB) Immunoprecipitation of EFEMP2 transfected lysate using rabbit polyclonal anti-EFEMP2 and Protein A Magnetic Bead (U0007), and immunoblotted with mouse purified polyclonal anti-EFEMP2.
Supplied Product	Antibody pair set content: 1. Antibody pair for IP: rabbit polyclonal anti-EFEMP2 (300 ul) 2. Antibody pair for WB: mouse purified polyclonal anti-EFEMP2 (50 ug)
Storage Instruction	Store reagents of the antibody pair set at -20°C or lower. Please aliquot to avoid repeated freeze thaw cycle. Reagents should be returned to -20°C storage immediately after use.

Applications

- Immunoprecipitation-Western Blot

[Protocol Download](#)

Gene Info — EFEMP2

Entrez GeneID [30008](#)

Gene Name EFEMP2

Gene Alias FBLN4, MBP1, UPH1

Gene Description EGF-containing fibulin-like extracellular matrix protein 2

Omim ID [219100 604633](#)

Gene Ontology [Hyperlink](#)

Gene Summary A large number of extracellular matrix proteins have been found to contain variations of the epidermal growth factor (EGF) domain and have been implicated in functions as diverse as blood coagulation, activation of complement and determination of cell fate during development. The protein encoded by this gene contains four EGF2 domains and six calcium-binding EGF2 domains. This gene is necessary for elastic fiber formation and connective tissue development. Defects in this gene are cause of an autosomal recessive cutis laxa syndrome. [provided by RefSeq]

Other Designations fibulin 4|fibulin-like extracellular matrix protein|mutant p53 binding protein 1