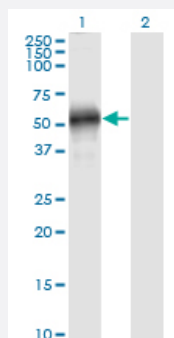


EFEMP2 monoclonal antibody (M19), clone 2C8

Catalog # H00030008-M19

Size 100 ug

Applications

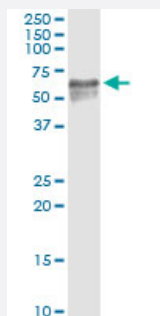


Western Blot (Transfected lysate)

Western Blot analysis of EFEMP2 expression in transfected 293T cell line by EFEMP2 monoclonal antibody (M01), clone 2C8.

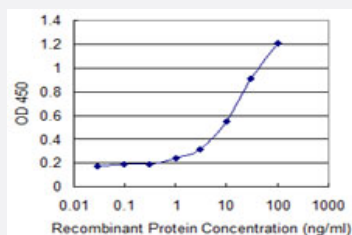
Lane 1: EFEMP2 transfected lysate(49.4 KDa).

Lane 2: Non-transfected lysate.



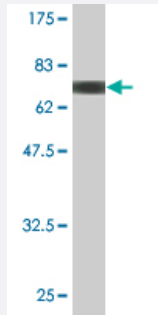
Immunoprecipitation

Immunoprecipitation of EFEMP2 transfected lysate using anti-EFEMP2 monoclonal antibody and Protein A Magnetic Bead, and immunoblotted with EFEMP2 MaxPab rabbit polyclonal antibody.



Sandwich ELISA (Recombinant protein)

Detection limit for recombinant GST tagged EFEMP2 is 0.3 ng/ml as a capture antibody.



Western Blot detection against Immunogen (71.61 KDa) .

Specification

Product Description	Mouse monoclonal antibody raised against a partial recombinant EFEMP2.
Immunogen	EFEMP2 (AAH10456.1, 26 a.a. ~ 443 a.a) partial recombinant protein with GST tag. MW of the GST tag alone is 26 KDa.
Sequence	SPQDSEEPDSYTECTDGYEWDPDSSQHCRDVNECLTIPEACKGEMKCIHYGGYLCLPRSAVIN DLHGEGPPPPVPPAQHPNCPGYPDDQDSCVDVDECAQALHDCRPSQDCHNLPGSYQCT CPDGYRKIGPECVDIDECRYRYCQHRCVNLPGSFRCQCEPGFQLGPNNRSCVDVNECDMGAPC EQRCFNSYGTFLCRCHQGYELHRDGFSCSDIDECSSYSLCQYRCVNEPGRFSCHCPQGYQLLA TRLCCQDIDECESGAHQCSAQTCVNFHGGYRCVDTNRCVEPYIQVSENRLCPASNPLCREQPS SIVHRYMTITSESVPADVFQIQATSVYPGAYNAFQIRAGNSQGDFYIRQINNVSAMLVLARPVTGPR EYVLDLEMTMNSLMSYRASSVLRLTVFVGAYTF
Host	Mouse
Reactivity	Human
Interspecies Antigen Sequence	Mouse (95); Rat (96)
Isotype	IgG2a Kappa
Quality Control Testing	Antibody Reactive Against Recombinant Protein. Western Blot detection against Immunogen (71.61 KDa) .
Storage Buffer	In 1x PBS, pH 7.4
Storage Instruction	Store at -20°C or lower. Aliquot to avoid repeated freezing and thawing.

Applications

- Western Blot (Transfected lysate)

Western Blot analysis of EFEMP2 expression in transfected 293T cell line by EFEMP2 monoclonal antibody (M01), clone 2C8.

Lane 1: EFEMP2 transfected lysate(49.4 KDa).

Lane 2: Non-transfected lysate.

[Protocol Download](#)

- Western Blot (Recombinant protein)

[Protocol Download](#)

- Immunoprecipitation

Immunoprecipitation of EFEMP2 transfected lysate using anti-EFEMP2 monoclonal antibody and Protein A Magnetic Bead, and immunoblotted with EFEMP2 MaxPab rabbit polyclonal antibody.

[Protocol Download](#)

- Sandwich ELISA (Recombinant protein)

Detection limit for recombinant GST tagged EFEMP2 is 0.3 ng/ml as a capture antibody.

[Protocol Download](#)

- ELISA

Gene Info — EFEMP2

Entrez GeneID [30008](#)

GeneBank Accession# [BC010456](#)

Protein Accession# [AAH10456.1](#)

Gene Name EFEMP2

Gene Alias FBLN4, MBP1, UPH1

Gene Description EGF-containing fibulin-like extracellular matrix protein 2

Omim ID [219100 604633](#)

Gene Ontology [Hyperlink](#)

Gene Summary

A large number of extracellular matrix proteins have been found to contain variations of the epidermal growth factor (EGF) domain and have been implicated in functions as diverse as blood coagulation, activation of complement and determination of cell fate during development. The protein encoded by this gene contains four EGF2 domains and six calcium-binding EGF2 domains. This gene is necessary for elastic fiber formation and connective tissue development. Defects in this gene are cause of an autosomal recessive cutis laxa syndrome. [provided by RefSeq]

Other Designations

fibulin 4|fibulin-like extracellular matrix protein|mutant p53 binding protein 1