

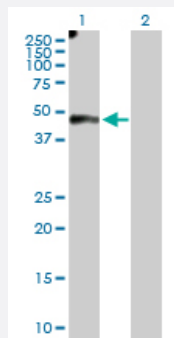
MaxPab®

# EFEMP2 purified MaxPab rabbit polyclonal antibody (D01P)

Catalog # H00030008-D01P

Size 100 ug

## Applications



### Western Blot (Transfected lysate)

Western Blot analysis of EFEMP2 expression in transfected 293T cell line ([H00030008-T01](#)) by EFEMP2 MaxPab polyclonal antibody.

Lane 1: EFEMP2 transfected lysate (49.40 kDa).

Lane 2: Non-transfected lysate.

## Specification

Product Description	Rabbit polyclonal antibody raised against a full-length human EFEMP2 protein.
Immunogen	EFEMP2 (AAH10456.1, 1 a.a. ~ 443 a.a) full-length human protein.
Sequence	MLPCASCLPGSLLLWALLLLLLGSASPQDSEEPDSYTECTDGYEWDPD SQHCRDVNECLTIPEA CKGEMKNCINHYGGYLC LPRSAAVINDLHGEGPPPPVPPAQHPNPCPPGYEPDDQDSCVDVDEC AQUALHDCRPSQDCHNLPGSYQCTCPDGYRKIGPECVDIDECRYRYCQHRCVNLPGSFRCQCEP GFQLGPNNRSCVDVNECDMGAPCEQRCFNSYGTFLCRCHQGYELHRDGFSCSDIDECSYSSYL CQYRCVNEPGRFSCHCPQGYQLLATRLCQDIDECESGAHQCSAQTCVNFHGGYRCVDTNRCV EPYQVSENRLCPASNPLCREQPSSIVHRYMTTISERSVPADV FQIQATSVYPGAYNAFQIRAGNS QGDFYIRQINNVSAMLV LARPVTGP REYVLDLEMVTMNSLMSYRASSVLRLTVFVGAYTF
Host	Rabbit
Reactivity	Human
Interspecies Antigen Sequence	Mouse (95); Rat (96)
Quality Control Testing	Antibody reactive against mammalian transfected lysate.
Storage Buffer	In 1x PBS, pH 7.4

## Storage Instruction

Store at -20°C or lower. Aliquot to avoid repeated freezing and thawing.

## Applications

- Western Blot (Transfected lysate)

Western Blot analysis of EFEMP2 expression in transfected 293T cell line ([H00030008-T01](#)) by EFEMP2 MaxPab polyclonal antibody.

Lane 1: EFEMP2 transfected lysate(49.40 KDa).

Lane 2: Non-transfected lysate.

[Protocol Download](#)

## Gene Info — EFEMP2

Entrez GeneID [30008](#)

GeneBank Accession# [BC010456.1](#)

Protein Accession# [AAH10456.1](#)

Gene Name EFEMP2

Gene Alias FBLN4, MBP1, UPH1

Gene Description EGF-containing fibulin-like extracellular matrix protein 2

Omim ID [219100 604633](#)

Gene Ontology [Hyperlink](#)

**Gene Summary** A large number of extracellular matrix proteins have been found to contain variations of the epidermal growth factor (EGF) domain and have been implicated in functions as diverse as blood coagulation, activation of complement and determination of cell fate during development. The protein encoded by this gene contains four EGF2 domains and six calcium-binding EGF2 domains. This gene is necessary for elastic fiber formation and connective tissue development. Defects in this gene are cause of an autosomal recessive cutis laxa syndrome. [provided by RefSeq]

**Other Designations** fibulin 4|fibulin-like extracellular matrix protein|mutant p53 binding protein 1