

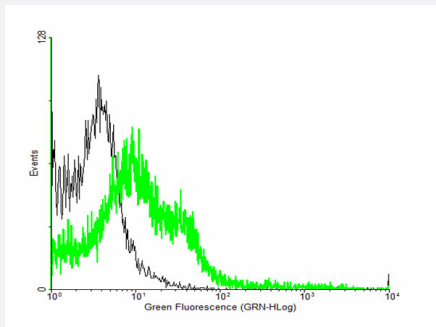
MaxPab®

# EFEMP2 purified MaxPab mouse polyclonal antibody (B01P)

Catalog # H00030008-B01P

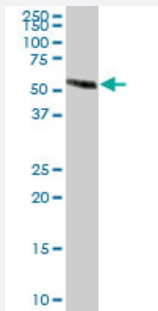
Size 50 ug

## Applications



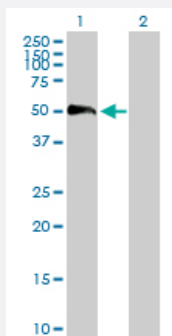
### Flow Cytometry

FACS analysis of negative control 293 cells (Black) and EFEMP2 expressing 293 cells (Green) using EFEMP2 purified MaxPab mouse polyclonal antibody.



### Western Blot (Tissue lysate)

EFEMP2 MaxPab polyclonal antibody. Western Blot analysis of EFEMP2 expression in human kidney.



### Western Blot (Transfected lysate)

Western Blot analysis of EFEMP2 expression in transfected 293T cell line ([H00030008-T01](#)) by EFEMP2 MaxPab polyclonal antibody.

Lane 1: EFEMP2 transfected lysate(48.73 KDa).

Lane 2: Non-transfected lysate.

## Specification

### Product Description

Mouse polyclonal antibody raised against a full-length human EFEMP2 protein.

<b>Immunogen</b>	EFEMP2 (AAH10456.1, 1 a.a. ~ 443 a.a) full-length human protein.
<b>Sequence</b>	MLPCASCLPGSLLLWALLLLLLLGSASPQDSEEPDSYTECTDGYEWDPDSSQHCRDVNECLTIPEA CKGEMKGINHYGGYLCLPRSAVINDLHGEGPPPPVPPAQHPNPCPPGYEPDDQDSCVDVDEC AQUALHDCRPSQDCHNLPGSYQCTCPDGYRKIGPECVDIDECRYRYCQHRCVNLPGSFRCQCEP GFQLGPNRSCVDVNECDMGAPCEQRCFNSYGTFLCRCHQGYELHRDGFSCSDIDECSYSSYL CQYRCVNEPGRFSCHCPQGYQLLATRLCQDIDECESGAHQCSAQTCVNFHGGYRCVDTNRCV EPYQVSENRLCPASNPLCREQPSSIVHRYMTTISERSVPADVFIQATSVPYGAYNFQIRAGNS QGDFYIRQINNVSAMLVLARPVGTGPREVLDLEMTMNSLMSYRASSVLRLTVFVGAYTF
<b>Host</b>	Mouse
<b>Reactivity</b>	Human
<b>Interspecies Antigen Sequence</b>	Mouse (95); Rat (96)
<b>Quality Control Testing</b>	Antibody reactive against mammalian transfected lysate.
<b>Storage Buffer</b>	In 1x PBS, pH 7.4
<b>Storage Instruction</b>	Store at -20°C or lower. Aliquot to avoid repeated freezing and thawing.

## Applications

- Flow Cytometry

FACS analysis of negative control 293 cells (Black) and EFEMP2 expressing 293 cells (Green) using EFEMP2 purified MaxPab mouse polyclonal antibody.

- Western Blot (Tissue lysate)

EFEMP2 MaxPab polyclonal antibody. Western Blot analysis of EFEMP2 expression in human kidney.

[Protocol Download](#)

- Western Blot (Transfected lysate)

Western Blot analysis of EFEMP2 expression in transfected 293T cell line ([H00030008-T01](#)) by EFEMP2 MaxPab polyclonal antibody.

Lane 1: EFEMP2 transfected lysate(48.73 KDa).

Lane 2: Non-transfected lysate.

[Protocol Download](#)

## Gene Info — EFEMP2

Entrez GeneID	<a href="#">30008</a>
GeneBank Accession#	<a href="#">BC010456.1</a>
Protein Accession#	<a href="#">AAH10456.1</a>
Gene Name	EFEMP2
Gene Alias	FBLN4, MBP1, UPH1
Gene Description	EGF-containing fibulin-like extracellular matrix protein 2
Omim ID	<a href="#">219100 604633</a>
Gene Ontology	<a href="#">Hyperlink</a>
Gene Summary	<p>A large number of extracellular matrix proteins have been found to contain variations of the epidermal growth factor (EGF) domain and have been implicated in functions as diverse as blood coagulation, activation of complement and determination of cell fate during development. The protein encoded by this gene contains four EGF2 domains and six calcium-binding EGF2 domains. This gene is necessary for elastic fiber formation and connective tissue development. Defects in this gene are cause of an autosomal recessive cutis laxa syndrome. [provided by RefSeq]</p>
Other Designations	fibulin 4 fibulin-like extracellular matrix protein mutant p53 binding protein 1