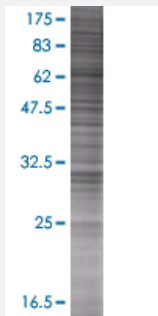


LMCD1 293T Cell Transient Overexpression Lysate(Denatured)

Catalog # H00029995-T01

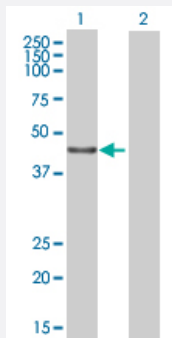
Size 100 uL

Applications



SDS-PAGE Gel

LMCD1 transfected lysate.



Western Blot

Lane 1: LMCD1 transfected lysate (40.26 KDa)

Lane 2: Non-transfected lysate.

Specification

| | |
|-------------------------------|------------------------|
| Transfected Cell Line | 293T |
| Plasmid | pCMV-LMCD1 full-length |
| Host | Human |
| Theoretical MW (kDa) | 40.26 |
| Interspecies Antigen Sequence | Mouse (93); Rat (93) |

Quality Control Testing

Transient overexpression cell lysate was tested with Anti-LMCD1 antibody ([H00029995-B01](#)) by Western Blots.
SDS-PAGE Gel
LMCD1 transfected lysate.
Western Blot
Lane 1: LMCD1 transfected lysate (40.26 KDa)
Lane 2: Non-transfected lysate.

Storage Buffer

1X Sample Buffer (50 mM Tris-HCl, 2% SDS, 10% glycerol, 300 mM 2-mercaptoethanol, 0.01% Bromophenol blue)

Storage Instruction

Store at -80°C. Aliquot to avoid repeated freezing and thawing.

Applications

- Western Blot

Gene Info — LMCD1

Entrez GeneID[29995](#)**GeneBank Accession#**[NM_014583.2](#)**Protein Accession#**[NP_055398.1](#)**Gene Name**

LMCD1

Gene Alias

-

Gene Description

LIM and cysteine-rich domains 1

Omim ID[604859](#)**Gene Ontology**[Hyperlink](#)**Gene Summary**

The protein encoded by this gene contains a cysteine-rich domain in the N-terminal region and 2 LIM domains in the C-terminal region. It also has several potential phosphorylation and N-myristoylation sites and a single potential N-glycosylation site. The presence of LIM domains implies involvement in protein-protein interactions. Expression of this gene has been detected in most tissues, with highest expression in skeletal muscle. Transcript variants utilizing alternative polyA signals have been observed. [provided by RefSeq]

Other Designations

dyxin

Disease

- [Tobacco Use Disorder](#)