

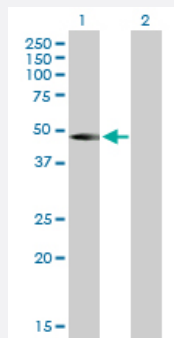
MaxPab®

LMCD1 purified MaxPab mouse polyclonal antibody (B01P)

Catalog # H00029995-B01P

Size 50 ug

Applications

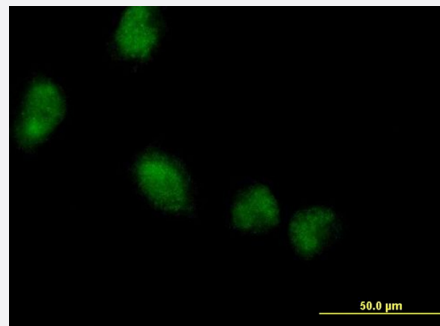


Western Blot (Transfected lysate)

Western Blot analysis of LMCD1 expression in transfected 293T cell line ([H00029995-T01](#)) by LMCD1 MaxPab polyclonal antibody.

Lane 1: LMCD1 transfected lysate(40.15 KDa).

Lane 2: Non-transfected lysate.



Immunofluorescence

Immunofluorescence of purified MaxPab antibody to LMCD1 on HeLa cell. [antibody concentration 10 ug/ml]

Specification

Product Description	Mouse polyclonal antibody raised against a full-length human LMCD1 protein.
Immunogen	LMCD1 (NP_055398.1, 1 a.a. ~ 365 a.a) full-length human protein.
Sequence	MAKVAKDLNPGVKKMSLGQLQSARGVACLGCKGTCSGFEPHSWRKICKSCKCSQEDHCLTSD LEDDRKIGRLLMDSKYSTLTARVKGGDGIRYKRNRMIMTNPIATGKDPTFDTITYEWAPPGVTQKL LQYMEIPKEKQPVTGTEGAFYRRRQLMHQLPIYDQDPSRCRGLLENELKLMEEFVKQYKSEALG VGEVALPGQGGLPKEEGKQKEKPEGAETTAATTNGSLSDPSKEVEYVCELCKGAAPPDSPVVY SDRAGYNKQWHPTCFVCAKCEPLVDLIYFWKDGAPWCGRHYCESLRPRCSGCDEIIFAEDYQR VEDLAWHRKHVCEGCEQLLSGRAYIVTKGQLLCPTCSKSKRS
Host	Mouse

Reactivity	Human
Interspecies Antigen Sequence	Mouse (93); Rat (93)
Quality Control Testing	Antibody reactive against mammalian transfected lysate.
Storage Buffer	In 1x PBS, pH 7.4
Storage Instruction	Store at -20°C or lower. Aliquot to avoid repeated freezing and thawing.

Applications

- Western Blot (Transfected lysate)

Western Blot analysis of LMCD1 expression in transfected 293T cell line ([H00029995-T01](#)) by LMCD1 MaxPab polyclonal antibody.

Lane 1: LMCD1 transfected lysate(40.15 KDa).

Lane 2: Non-transfected lysate.

[Protocol Download](#)

- Immunofluorescence

Immunofluorescence of purified MaxPab antibody to LMCD1 on HeLa cell. [antibody concentration 10 ug/ml]

Gene Info — LMCD1

Entrez GeneID	29995
GeneBank Accession#	NM_014583.2
Protein Accession#	NP_055398.1
Gene Name	LMCD1
Gene Alias	-
Gene Description	LIM and cysteine-rich domains 1
Omim ID	604859
Gene Ontology	Hyperlink

Gene Summary

The protein encoded by this gene contains a cysteine-rich domain in the N-terminal region and 2 LIM domains in the C-terminal region. It also has several potential phosphorylation and N-myristoylation sites and a single potential N-glycosylation site. The presence of LIM domains implies involvement in protein-protein interactions. Expression of this gene has been detected in most tissues, with highest expression in skeletal muscle. Transcript variants utilizing alternative polyA signals have been observed. [provided by RefSeq]

Other Designations

dyxin

Disease

- [Tobacco Use Disorder](#)