

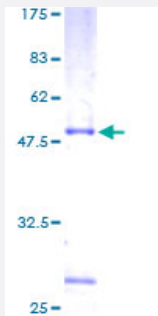
Full-Length

RHOD (Human) Recombinant Protein (P01)

Catalog # H00029984-P01

Size 25 ug, 10 ug

Applications



Specification

Product Description	Human RHOD full-length ORF (AAH01338, 1 a.a. - 210 a.a.) recombinant protein with GST-tag at N-terminal.
Sequence	MTAAQAAGEEAPPGVRSVKVVLVGDGGCGKTSLLMVFADGAFPESYTPTVFERYMVNLQVKGK PVHLHIWDTAGQDDYDRLRPLFYPDASVLLLCFDVTSPNSFDNIFNRWYPEVNHFCCKVPIVGC KTDLRKDKSLVNKLRRNGLEPVTYHRGQEMARSVGAVAYLECSARLHDNVHAVFQEAAEVALSS RGRNFWRRITQGFCVVT
Host	Wheat Germ (in vitro)
Theoretical MW (kDa)	48.84
Interspecies Antigen Sequence	Mouse (82); Rat (82)
Preparation Method	in vitro wheat germ expression system
Purification	Glutathione Sepharose 4 Fast Flow
Quality Control Testing	12.5% SDS-PAGE Stained with Coomassie Blue.
Storage Buffer	50 mM Tris-HCl, 10 mM reduced Glutathione, pH=8.0 in the elution buffer.
Storage Instruction	Store at -80°C. Aliquot to avoid repeated freezing and thawing.

Note

Best use within three months from the date of receipt of this protein.

Applications

- Enzyme-linked Immunoabsorbent Assay
- Western Blot (Recombinant protein)
- Antibody Production
- Protein Array

Gene Info — RHOD

Entrez GeneID [29984](#)**GeneBank Accession#** [BC001338](#)**Protein Accession#** [AAH01338](#)**Gene Name** RHOD**Gene Alias** ARHD, RHOHP1, RHOM, Rho**Gene Description** ras homolog gene family, member D**Omim ID** [605781](#)**Gene Ontology** [Hyperlink](#)

Gene Summary Ras homolog, or Rho, proteins interact with protein kinases and may serve as targets for activated GTPase. They play a critical role in muscle differentiation. The protein encoded by this gene binds GTP and is a member of the small GTPase superfamily. It is involved in endosome dynamics and reorganization of the actin cytoskeleton, and it may coordinate membrane transport with the function of the cytoskeleton. [provided by RefSeq]

Other Designations Rho-related GTP-binding protein RhoD|Rho-related protein HP1|ras homolog D|ras homolog gene family, member A

Pathway

- [Axon guidance](#)