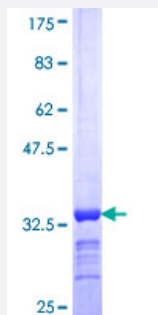


# UBQLN2 (Human) Recombinant Protein (Q01)

Catalog # H00029978-Q01

Size 25 ug, 10 ug

## Applications



## Specification

<b>Product Description</b>	Human UBQLN2 partial ORF ( NP_038472, 555 a.a. - 624 a.a.) recombinant protein with GST-tag at N-terminal.
<b>Sequence</b>	PNQQFIQQMVQALAGANAPQLPNPEVRFQQQLEQLNAMGFLNREANLQALIATGGDINAAIERLLG SQPS
<b>Host</b>	Wheat Germ (in vitro)
<b>Theoretical MW (kDa)</b>	33.44
<b>Interspecies Antigen Sequence</b>	Mouse (87); Rat (86)
<b>Preparation Method</b>	<a href="#">in vitro wheat germ expression system</a>
<b>Purification</b>	Glutathione Sepharose 4 Fast Flow
<b>Quality Control Testing</b>	12.5% SDS-PAGE Stained with Coomassie Blue.
<b>Storage Buffer</b>	50 mM Tris-HCl, 10 mM reduced Glutathione, pH=8.0 in the elution buffer.
<b>Storage Instruction</b>	Store at -80°C. Aliquot to avoid repeated freezing and thawing.
<b>Note</b>	Best use within three months from the date of receipt of this protein.

## Applications

- Enzyme-linked Immunoabsorbent Assay
- Western Blot (Recombinant protein)
- Antibody Production
- Protein Array

## Gene Info — UBQLN2

Entrez GeneID [29978](#)

GeneBank Accession# [NM\\_013444](#)

Protein Accession# [NP\\_038472](#)

Gene Name UBQLN2

Gene Alias CHAP1, CHAP1/DSK2, Dsk2, HRIHFB2157, LIC-2, N4BP4, PLIC-2, PLIC2, RIHFB2157

Gene Description ubiquilin 2

Omim ID [300264](#)

Gene Ontology [Hyperlink](#)

**Gene Summary** This gene encodes an ubiquitin-like protein (ubiquilin) that shares high degree of similarity with related products in yeast, rat and frog. Ubiquilins contain a N-terminal ubiquitin-like domain and a C-terminal ubiquitin-associated domain. They physically associate with both proteasomes and ubiquitin ligases, and thus thought to functionally link the ubiquitination machinery to the proteasome to affect in vivo protein degradation. This ubiquilin has also been shown to bind the ATPase domain of the Hsp70-like Stch protein. [provided by RefSeq]

**Other Designations** Nedd4 binding protein 4|bA431N15.1 (ubiquilin 2)