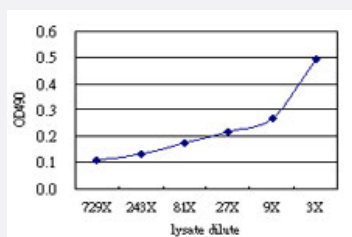


# NRBP1 (Human) Matched Antibody Pair

Catalog # H00029959-AP51

Size 1 Set

## Applications



Sandwich ELISA detection sensitivity ranging from approximately 243x to 3x dilution of the NRBP1 293T overexpression lysate (non-denatured).

## Specification

<b>Product Description</b>	This antibody pair set comes with a matched antibody pair to detect and quantify the protein level of human NRBP1.
<b>Interspecies Antigen Sequence</b>	Mouse (98); Rat (99)
<b>Quality Control Testing</b>	Standard curve using NRBP1 293T overexpression lysate (non-denatured) as an analyte. Sandwich ELISA detection sensitivity ranging from approximately 243x to 3x dilution of the NRBP1 293T overexpression lysate (non-denatured).
<b>Supplied Product</b>	Antibody pair set content: 1. Capture antibody: mouse monoclonal anti-NRBP1 (100 ug) 2. Detection antibody: rabbit purified polyclonal anti-NRBP1 (50 ug) *Reagents are sufficient for at least 3-5 x 96 well plates using recommended protocols.
<b>Storage Instruction</b>	Store reagents of the antibody pair set at -20°C or lower. Please aliquot to avoid repeated freeze thaw cycle. Reagents should be returned to -20°C storage immediately after use.

## Applications

- ELISA Pair (Transfected lysate)

[Protocol Download](#)

## Gene Info — NRBP1

Entrez GeneID	<a href="#">29959</a>
Gene Name	NRBP1
Gene Alias	BCON3, FLJ27109, FLJ35541, MADM, MUDPNP, NRBP
Gene Description	nuclear receptor binding protein 1
Omim ID	<a href="#">606010</a>
Gene Ontology	<a href="#">Hyperlink</a>
Other Designations	OTTHUMP00000123427 OTTHUMP00000123428 multiple domain putative nuclear protein myeloid leukemia factor 1 adaptor molecule nuclear receptor binding protein