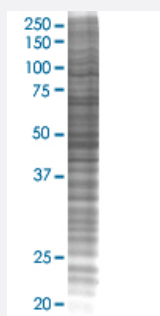


LASS2 293T Cell Transient Overexpression Lysate(Denatured)

Catalog # H00029956-T02

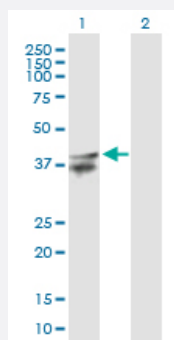
Size 100 uL

Applications



SDS-PAGE Gel

LASS2 transfected lysate.



Western Blot

Lane 1: LASS2 transfected lysate (44.90 KDa)

Lane 2: Non-transfected lysate.

Specification

Transfected Cell Line	293T
Plasmid	pCMV-LASS2 full-length
Host	Human
Theoretical MW (kDa)	44.9
Interspecies Antigen Sequence	Mouse (92); Rat (92)

Quality Control Testing

Transient overexpression cell lysate was tested with Anti-LASS2 antibody ([H00029956-B01P](#)) by Western Blots.
SDS-PAGE Gel
LASS2 transfected lysate.
Western Blot
Lane 1: LASS2 transfected lysate (44.90 KDa)
Lane 2: Non-transfected lysate.

Storage Buffer

1X Sample Buffer (50 mM Tris-HCl, 2% SDS, 10% glycerol, 300 mM 2-mercaptoethanol, 0.01% Bromophenol blue)

Storage Instruction

Store at -80°C. Aliquot to avoid repeated freezing and thawing.

Applications

- Western Blot

Gene Info — LASS2

Entrez GeneID[29956](#)**GeneBank Accession#**[NM_022075.2](#)**Protein Accession#**[NP_071358.1](#)**Gene Name**

LASS2

Gene Alias

CerS2, FLJ10243, L3, MGC987, SP260, TMSG1

Gene Description

LAG1 homolog, ceramide synthase 2

Omim ID[606920](#)**Gene Ontology**[Hyperlink](#)**Gene Summary**

This gene encodes a protein that has sequence similarity to yeast longevity assurance gene 1. Mutation or overexpression of the related gene in yeast has been shown to alter yeast lifespan. The human protein may play a role in the regulation of cell growth. Alternatively spliced transcript variants encoding the same protein have been described. [provided by RefSeq]

Other Designations

LAG1 longevity assurance 2|OTTHUMP00000033028|ceramide synthase 2|longevity assurance (LAG1, S. cerevisiae) homolog 2|tumor metastasis-suppressor

Disease

- [Kidney Failure](#)