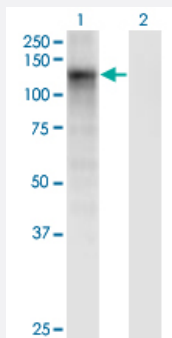


# DSE monoclonal antibody (M03), clone 6D4

Catalog # H00029940-M03

Size 100 ug

## Applications

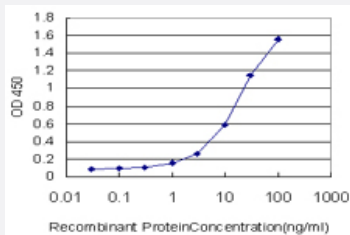


### Western Blot (Transfected lysate)

Western Blot analysis of DSE expression in transfected 293T cell line by DSE monoclonal antibody (M03), clone 6D4.

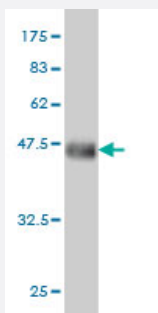
Lane 1: DSE transfected lysate (Predicted MW: 109.8 kDa).

Lane 2: Non-transfected lysate.



### Sandwich ELISA (Recombinant protein)

Detection limit for recombinant GST tagged DSE is approximately 0.3ng/ml as a capture antibody.



Western Blot detection against Immunogen (36.74 kDa) .

## Specification

### Product Description

Mouse monoclonal antibody raised against a partial recombinant DSE.

<b>Immunogen</b>	DSE (NP_037484, 574 a.a. ~ 673 a.a) partial recombinant protein with GST tag. MW of the GST tag alone is 26 KDa.
<b>Sequence</b>	LGEEESPLETAASFFHNVDVPFEETVVDGVHGAFIRQRDGLYKMYWMDDTGYSEKATFASVTYPR GYPYNGTNYVNVTMHLRSPITRAAYLFIGPSIDVQS
<b>Host</b>	Mouse
<b>Reactivity</b>	Human
<b>Interspecies Antigen Sequence</b>	Mouse (96); Rat (99)
<b>Isotype</b>	IgG2a Kappa
<b>Quality Control Testing</b>	Antibody Reactive Against Recombinant Protein. Western Blot detection against Immunogen (36.74 KDa) .
<b>Storage Buffer</b>	In 1x PBS, pH 7.4
<b>Storage Instruction</b>	Store at -20°C or lower. Aliquot to avoid repeated freezing and thawing.

## Applications

- Western Blot (Transfected lysate)

Western Blot analysis of DSE expression in transfected 293T cell line by DSE monoclonal antibody (M03), clone 6D4.

Lane 1: DSE transfected lysate (Predicted MW: 109.8 KDa).

Lane 2: Non-transfected lysate.

[Protocol Download](#)

- Western Blot (Recombinant protein)

[Protocol Download](#)

- Sandwich ELISA (Recombinant protein)

Detection limit for recombinant GST tagged DSE is approximately 0.3ng/ml as a capture antibody.

[Protocol Download](#)

- ELISA

## Gene Info — DSE

Entrez GeneID	<a href="#">29940</a>
GeneBank Accession#	<a href="#">NM_013352</a>
Protein Accession#	<a href="#">NP_037484</a>
Gene Name	DSE
Gene Alias	DSEPI, SART2
Gene Description	dermatan sulfate epimerase
Omim ID	<a href="#">605942</a>
Gene Ontology	<a href="#">Hyperlink</a>
Gene Summary	<p>The protein encoded by this gene is a tumor-rejection antigen. This antigen possesses tumor epitopes capable of inducing HLA-A24-restricted and tumor-specific cytotoxic T lymphocytes in cancer patients and may be useful for specific immunotherapy. This gene product is localized to the endoplasmic reticulum. Two transcript variants encoding the same protein have been found for this gene. [provided by RefSeq]</p>
Other Designations	OTTHUMP00000017059 OTTHUMP00000040406 squamous cell carcinoma antigen recognized by T cells 2

## Pathway

- [Chondroitin sulfate biosynthesis](#)