

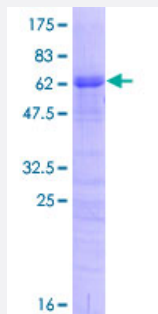
Full-Length

TRA2A (Human) Recombinant Protein (P02)

Catalog # H00029896-P02

Size 10 ug, 25 ug

Applications



Specification

Product Description

Human TRA2A full-length ORF (NP_037425.1, 1 a.a. - 282 a.a.) recombinant protein with GST-tag at N-terminal.

Sequence

MSDVEENNFEGRSRSQSKSPTGTPARVKSESRSRSPSRVSKHSESHSRSRSKSRSRSR
HSHRRYTRSRSHSHSHRRRSRSTPEYRRRRSRSHSPMSNRRRHTGSRANPDNTCLGVFGL
SLYTTERDLREVFSRYGPLSGVNVVYDQRTGRSRGFAFVYFERIDDSKEAMERANGMELDGRIR
VDYSITKRAHTPTPGYMGPRTHSGGGGGGGGGGGGGGGGGRRRDSYYDRGYDRGYDRYEDYDR
YRRRSPSPYYSRYRSRSRRSYSPRRY

Host

Wheat Germ (in vitro)

Theoretical MW (kDa)

59.1

Interspecies Antigen Sequence

Mouse (99); Rat (99)

Preparation Method

[in vitro wheat germ expression system](#)

Purification

Glutathione Sepharose 4 Fast Flow

Quality Control Testing

12.5% SDS-PAGE Stained with Coomassie Blue.

Storage Buffer

50 mM Tris-HCl, 10 mM reduced Glutathione, pH=8.0 in the elution buffer.

Storage Instruction

Store at -80°C. Aliquot to avoid repeated freezing and thawing.

Note

Best use within three months from the date of receipt of this protein.

Applications

- Enzyme-linked Immunoabsorbent Assay
- Western Blot (Recombinant protein)
- Antibody Production
- Protein Array

Gene Info — TRA2A

Entrez GeneID[29896](#)**GeneBank Accession#**[NM_013293.3](#)**Protein Accession#**[NP_037425.1](#)**Gene Name**

TRA2A

Gene Alias

HSU53209

Gene Description

transformer-2 alpha

Omim ID[602718](#)**Gene Ontology**[Hyperlink](#)**Gene Summary**

This gene is a member of the transformer 2 homolog family and encodes a protein with two RS domains and an RRM (RNA recognition motif) domain. This phosphorylated nuclear protein binds to specific RNA sequences and plays a role in the regulation of pre-mRNA splicing. Several alternatively spliced transcript variants of this gene have been described; however, the full-length nature of some of these variants has not been determined. [provided by RefSeq]

Other Designations

Tra2alpha|htra-2 alpha|putative MAPK activating protein PM24