

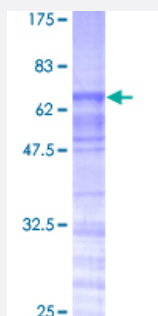
Full-Length

## TRA2A (Human) Recombinant Protein (P01)

Catalog # H00029896-P01

Size 25 ug, 10 ug

### Applications



### Specification

#### Product Description

Human TRA2A full-length ORF ( AAH17094, 1 a.a. - 282 a.a.) recombinant protein with GST-tag at N-terminal.

#### Sequence

MSDVEENNFEGRSRSQSKSPTGTPARVKSESRSRSPSRVSKHSESHSRSRSKSRSRSR  
HSHRRYTRSRSHSHSHRRRSRSTPEYRRRRSRSHSPMSNRRRHTGSRANPDNTCLGVFGL  
SLYTTERDLREVFSRYGPLSGVNVVDQRTGRSRGFAFVYFERIDDSKEAMERANGMELDGRIR  
VDYSITKRAHTPTPGYMGRPTHSGGGGGGGGGGGGGGGGGRRRDSYYDRGYDRGYDRYEDYDR  
YRRRSPSPYYSRYRSRSRSRSPRRY

#### Host

Wheat Germ (in vitro)

#### Theoretical MW (kDa)

56.76

#### Interspecies Antigen Sequence

Mouse (99); Rat (99)

#### Preparation Method

[in vitro wheat germ expression system](#)

#### Purification

Glutathione Sepharose 4 Fast Flow

#### Quality Control Testing

12.5% SDS-PAGE Stained with Coomassie Blue.

#### Storage Buffer

50 mM Tris-HCl, 10 mM reduced Glutathione, pH=8.0 in the elution buffer.

**Storage Instruction**

Store at -80°C. Aliquot to avoid repeated freezing and thawing.

**Note**

Best use within three months from the date of receipt of this protein.

## Applications

- Enzyme-linked Immunoabsorbent Assay
- Western Blot (Recombinant protein)
- Antibody Production
- Protein Array

## Gene Info — TRA2A

**Entrez GeneID**[29896](#)**GeneBank Accession#**[BC017094](#)**Protein Accession#**[AAH17094](#)**Gene Name**

TRA2A

**Gene Alias**

HSU53209

**Gene Description**

transformer-2 alpha

**Omim ID**[602718](#)**Gene Ontology**[Hyperlink](#)**Gene Summary**

This gene is a member of the transformer 2 homolog family and encodes a protein with two RS domains and an RRM (RNA recognition motif) domain. This phosphorylated nuclear protein binds to specific RNA sequences and plays a role in the regulation of pre-mRNA splicing. Several alternatively spliced transcript variants of this gene have been described; however, the full-length nature of some of these variants has not been determined. [provided by RefSeq]

**Other Designations**

Tra2alpha|htra-2 alpha|putative MAPK activating protein PM24