

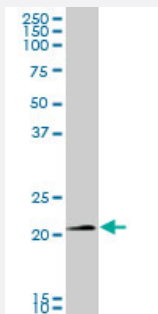
MaxPab®

SNX10 purified MaxPab mouse polyclonal antibody (B01P)

Catalog # H00029887-B01P

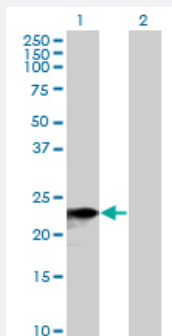
Size 50 ug

Applications



Western Blot (Tissue lysate)

SNX10 MaxPab polyclonal antibody. Western Blot analysis of SNX10 expression in human kidney.



Western Blot (Transfected lysate)

Western Blot analysis of SNX10 expression in transfected 293T cell line ([H00029887-T01](#)) by SNX10 MaxPab polyclonal antibody.

Lane 1: SNX10 transfected lysate(22.11 KDa).

Lane 2: Non-transfected lysate.

Specification

Product Description	Mouse polyclonal antibody raised against a full-length human SNX10 protein.
Immunogen	SNX10 (NP_037454.2, 1 a.a. ~ 201 a.a) full-length human protein.
Sequence	MFPEQQKEEFVSVWVRDPRIKEDFWHSYIDYEICHTNSMCFMTKTSCVRRRYREFVWLRQRLQ SNALLVQLPELPSKNLFFNMNNRQHVDQRRQGLEDFLRKVLQNALLSDSSLHLFLQSHLNSEDI EACVSGQTKYSVEEAIHKFALMNNRRFPEDDEEGKKENDIDYDSESSSSGLGHSSDDSSSHGCKV NTAPQES
Host	Mouse
Reactivity	Human

Quality Control Testing	Antibody reactive against mammalian transfected lysate.
Storage Buffer	In 1x PBS, pH 7.4
Storage Instruction	Store at -20°C or lower. Aliquot to avoid repeated freezing and thawing.

Applications

- Western Blot (Tissue lysate)

SNX10 MaxPab polyclonal antibody. Western Blot analysis of SNX10 expression in human kidney.

[Protocol Download](#)

- Western Blot (Transfected lysate)

Western Blot analysis of SNX10 expression in transfected 293T cell line ([H00029887-T01](#)) by SNX10 MaxPab polyclonal antibody.

Lane 1: SNX10 transfected lysate(22.11 KDa).

Lane 2: Non-transfected lysate.

[Protocol Download](#)

Gene Info — SNX10

Entrez GeneID	29887
GeneBank Accession#	NM_013322
Protein Accession#	NP_037454.2
Gene Name	SNX10
Gene Alias	MGC33054
Gene Description	sorting nexin 10
Gene Ontology	Hyperlink
Gene Summary	This gene encodes a member of the sorting nexin family. Members of this family contain a phox (PX) domain, which is a phosphoinositide binding domain, and are involved in intracellular trafficking. This protein does not contain a coiled coil region, like some family members. This gene encodes a protein whose function has not been determined. [provided by RefSeq]
Other Designations	OTTHUMP00000025268 OTTHUMP00000122521