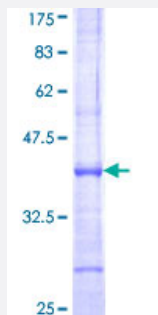


SENP1 (Human) Recombinant Protein (Q01)

Catalog # H00029843-Q01

Size 25 ug, 10 ug

Applications



Specification

Product Description	Human SENP1 partial ORF (NP_055369, 544 a.a. - 643 a.a.) recombinant protein with GST-tag at N-terminal.
Sequence	KNITYYDSMGGINNEACRILLQYLKQESIDKKRKEFD TNGWQLFSKKSQIPQQMNGSDCGMFAKY ADCITKDRPINFTQQHMPYFRKRMVWEILHRKLL
Host	Wheat Germ (in vitro)
Theoretical MW (kDa)	36.74
Interspecies Antigen Sequence	Mouse (97)
Preparation Method	in vitro wheat germ expression system
Purification	Glutathione Sepharose 4 Fast Flow
Quality Control Testing	12.5% SDS-PAGE Stained with Coomassie Blue.
Storage Buffer	50 mM Tris-HCl, 10 mM reduced Glutathione, pH=8.0 in the elution buffer.
Storage Instruction	Store at -80°C. Aliquot to avoid repeated freezing and thawing.
Note	Best use within three months from the date of receipt of this protein.

Applications

- Enzyme-linked Immunoabsorbent Assay
- Western Blot (Recombinant protein)
- Antibody Production
- Protein Array

Gene Info — SENP1

Entrez GeneID	29843
GeneBank Accession#	NM_014554
Protein Accession#	NP_055369
Gene Name	SENP1
Gene Alias	SuPr-2
Gene Description	SUMO1/sentrin specific peptidase 1
Gene Ontology	Hyperlink
Gene Summary	The covalent modification of proteins by the small ubiquitin (UBB; MIM 191339)-like protein SUMO (see SUMO1, MIM 601912) is implicated in the regulation of nucleocytoplasmic transport, genomic stability, gene transcription, and other processes. Sumoylation is catalyzed on target lysine residues by a multienzyme process and is reversed by desumoylating enzymes such as SENP1 (Yamaguchi et al., 2005 [PubMed 15923632]).[supplied by OMIM]
Other Designations	SUMO1/sentrin specific protease 1 sentrin/SUMO-specific protease sentrin/SUMO-specific protease 1