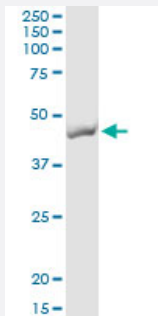


TMOD2 (Human) IP-WB Antibody Pair

Catalog # H00029767-PW2

Size 1 Set

Applications



Immunoprecipitation of TMOD2 transfected lysate using rabbit polyclonal anti-TMOD2 and Protein A Magnetic Bead ([U0007](#)), and immunoblotted with mouse purified polyclonal anti-TMOD2.

Specification

Product Description	This IP-WB antibody pair set comes with one antibody for immunoprecipitation and another to detect the precipitated protein in western blot.
Reactivity	Human
Quality Control Testing	Immunoprecipitation-Western Blot (IP-WB) Immunoprecipitation of TMOD2 transfected lysate using rabbit polyclonal anti-TMOD2 and Protein A Magnetic Bead (U0007), and immunoblotted with mouse purified polyclonal anti-TMOD2.
Supplied Product	Antibody pair set content: 1. Antibody pair for IP: rabbit polyclonal anti-TMOD2 (300 ul) 2. Antibody pair for WB: mouse purified polyclonal anti-TMOD2 (50 ug)
Storage Instruction	Store reagents of the antibody pair set at -20°C or lower. Please aliquot to avoid repeated freeze thaw cycle. Reagents should be returned to -20°C storage immediately after use.

Applications

- Immunoprecipitation-Western Blot

[Protocol Download](#)

Gene Info — TMOD2

Entrez GeneID [29767](#)**Gene Name** TMOD2**Gene Alias** MGC39481, N-TMOD, NTMOD**Gene Description** tropomodulin 2 (neuronal)**Omim ID** [602928](#)**Gene Ontology** [Hyperlink](#)

Gene Summary This gene encodes a neuronal-specific member of the tropomodulin family of actin-regulatory proteins. The encoded protein caps the pointed end of actin filaments preventing both elongation and depolymerization. The capping activity of this protein is dependent on its association with tropomyosin. Alternatively spliced transcript variants encoding different isoforms have been described. [provided by RefSeq]

Other Designations neuronal tropomodulin