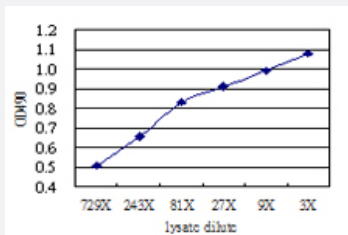


BLNK (Human) Matched Antibody Pair

Catalog # H00029760-AP51

Size 1 Set

Applications



Sandwich ELISA detection sensitivity ranging from approximately 729x to 3x dilution of the BLNK 293T overexpression lysate (non-denatured).

Specification

Product Description	This antibody pair set comes with a matched antibody pair to detect and quantify the protein level of human BLNK.
Reactivity	Human
Quality Control Testing	Standard curve using BLNK 293T overexpression lysate (non-denatured) as an analyte. Sandwich ELISA detection sensitivity ranging from approximately 729x to 3x dilution of the BLNK 293T overexpression lysate (non-denatured).
Supplied Product	Antibody pair set content: 1. Capture antibody: mouse monoclonal anti-BLNK, IgG2a Kappa (100 ug) 2. Detection antibody: rabbit purified polyclonal anti-BLNK (50 ug) *Reagents are sufficient for at least 3-5 x 96 well plates using recommended protocols.
Storage Instruction	Store reagents of the antibody pair set at -20°C or lower. Please aliquot to avoid repeated freeze thaw cycle. Reagents should be returned to -20°C storage immediately after use.

Applications

- ELISA Pair (Transfected lysate)

[Protocol Download](#)

Gene Info — BLNK

Entrez GeneID [29760](#)

Gene Name BLNK

Gene Alias BASH, BLNK-S, LY57, MGC111051, SLP-65, SLP65

Gene Description B-cell linker

Omim ID [604515](#)

Gene Ontology [Hyperlink](#)

Gene Summary This gene encodes a cytoplasmic linker or adaptor protein that plays a critical role in B cell development. This protein bridges B cell receptor-associated kinase activation with downstream signaling pathways, thereby affecting various biological functions. The phosphorylation of five tyrosine residues is necessary for this protein to nucleate distinct signaling effectors following B cell receptor activation. Mutations in this gene cause hypoglobulinemia and absent B cells, a disease in which the pro- to pre-B-cell transition is developmentally blocked. Deficiency in this protein has also been shown in some cases of pre-B acute lymphoblastic leukemia. Alternatively spliced transcript variants encoding different isoforms have been found for this gene. [provided by RefSeq]

Other Designations B cell linker protein|B-cell adapter containing a SH2 domain protein|B-cell adapter containing a Src homology 2 domain protein|OTTHUMP00000020167|Src homology 2 domain-containing leukocyte protein of 65 kDa

Pathway

- [B cell receptor signaling pathway](#)
- [Primary immunodeficiency](#)

Disease

- [Alzheimer Disease](#)
- [Genetic Predisposition to Disease](#)
- [Tobacco Use Disorder](#)