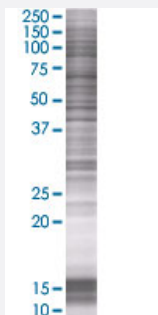


LGALS13 293T Cell Transient Overexpression Lysate(Denatured)

Catalog # H00029124-T01

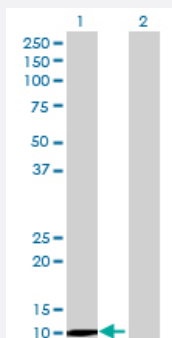
Size 100 uL

Applications



SDS-PAGE Gel

LGALS13 transfected lysate.



Western Blot

Lane 1: LGALS13 transfected lysate (15.4 KDa)

Lane 2: Non-transfected lysate.

Specification

Transfected Cell Line 293T

Plasmid pCMV-LGALS13 full-length

Host Human

Theoretical MW (kDa) 15.4

Quality Control Testing Transient overexpression cell lysate was tested with Anti-LGALS13 antibody ([H00029124-B01](#)) by Western Blots.
 SDS-PAGE Gel
 LGALS13 transfected lysate.
 Western Blot
 Lane 1: LGALS13 transfected lysate (15.4 KDa)
 Lane 2: Non-transfected lysate.

Storage Buffer

1X Sample Buffer (50 mM Tris-HCl, 2% SDS, 10% glycerol, 300 mM 2-mercaptoethanol, 0.01% Bromophenol blue)

Storage Instruction

Store at -80°C. Aliquot to avoid repeated freezing and thawing.

Applications

- Western Blot

Gene Info — LGALS13

Entrez GeneID[29124](#)**GeneBank Accession#**[NM_013268.2](#)**Protein Accession#**[AAH66304.1](#)**Gene Name**

LGALS13

Gene Alias

GAL13, PLAC8, PP13

Gene Description

lectin, galactoside-binding, soluble, 13

Omim ID[608717](#)**Gene Ontology**[Hyperlink](#)**Gene Summary**

Lysophospholipases are enzymes that act on biological membranes to regulate the multifunctional lysophospholipids. The protein encoded by this gene has lysophospholipase activity. It is composed of two identical subunits which are held together by disulfide bonds. This protein has structural similarity to several members of the beta-galactoside-binding S-type lectin family. [provided by RefSeq]

Other Designations

galectin 13|galectin-13|placental protein 13

Disease

- [Obstetric Labor](#)
- [Pre-Eclampsia](#)