

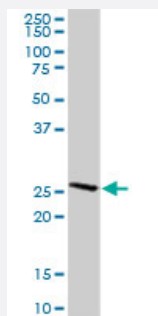
MaxPab®

CLEC2D purified MaxPab rabbit polyclonal antibody (D01P)

Catalog # H00029121-D01P

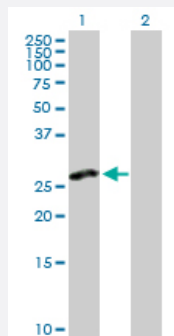
Size 100 ug

Applications



Western Blot (Tissue lysate)

CLEC2D MaxPab rabbit polyclonal antibody. Western Blot analysis of CLEC2D expression in mouse kidney.



Western Blot (Transfected lysate)

Western Blot analysis of CLEC2D expression in transfected 293T cell line ([H00029121-T02](#)) by CLEC2D MaxPab polyclonal antibody.

Lane 1: CLEC2D transfected lysate(21.80 KDa).

Lane 2: Non-transfected lysate.

Specification

Product Description	Rabbit polyclonal antibody raised against a full-length human CLEC2D protein.
Immunogen	CLEC2D (NP_037401.1, 1 a.a. ~ 191 a.a) full-length human protein.
Sequence	MHDSNNVEKDITPSELPANPGCLHSKEHSIKATLWRLFFLIMFLTIVCGMVAALSAIRANCHQEPS VCLQAACPESWIGFQRKCFYFSDDTKNWTSSQRFCDSDADLAQVESFQELNLLRYKGPSDH WIGLSREQQQPWKWINGTEWTRQFPILGAGECAYLNDKGASSARHYTERKWICKSKSDIHV
Host	Rabbit
Reactivity	Human, Mouse

Quality Control Testing	Antibody reactive against mammalian transfected lysate.
Storage Buffer	In 1x PBS, pH 7.4
Storage Instruction	Store at -20°C or lower. Aliquot to avoid repeated freezing and thawing.

Applications

- Western Blot (Tissue lysate)

CLEC2D MaxPab rabbit polyclonal antibody. Western Blot analysis of CLEC2D expression in mouse kidney.

[Protocol Download](#)

- Western Blot (Transfected lysate)

Western Blot analysis of CLEC2D expression in transfected 293T cell line ([H00029121-T02](#)) by CLEC2D MaxPab polyclonal antibody.

Lane 1: CLEC2D transfected lysate(21.80 KDa).

Lane 2: Non-transfected lysate.

[Protocol Download](#)

Gene Info — CLEC2D

Entrez GeneID	29121
GeneBank Accession#	NM_013269
Protein Accession#	NP_037401.1
Gene Name	CLEC2D
Gene Alias	CLAX, LLT1, OCIL
Gene Description	C-type lectin domain family 2, member D
Omim ID	605659
Gene Ontology	Hyperlink

Gene Summary	This gene encodes a member of the natural killer cell receptor C-type lectin family. The encoded protein inhibits osteoclast formation and contains a transmembrane domain near the N-terminus as well as the C-type lectin-like extracellular domain. Several alternatively spliced transcript variants have been identified, but the full-length nature of every transcript has not been defined. [provided by RefSeq]
--------------	--

Other Designations

C-type lectin related f|C-type lectin superfamily 2, member D|lectin-like NK cell receptor|lectin-like transcript 1|osteoclast inhibitory lectin

Disease

- [Addison Disease](#)
- [Genetic Predisposition to Disease](#)
- [Osteoporosis](#)