

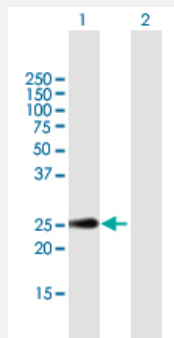
MaxPab®

CLEC2D purified MaxPab mouse polyclonal antibody (B01P)

Catalog # H00029121-B01P

Size 50 ug

Applications



Western Blot (Transfected lysate)

Western Blot analysis of CLEC2D expression in transfected 293T cell line ([H00029121-T01](#)) by CLEC2D MaxPab polyclonal antibody.

Lane 1: CLEC2D transfected lysate(21.01 KDa).

Lane 2: Non-transfected lysate.

Specification

| | |
|-------------------------|--|
| Product Description | Mouse polyclonal antibody raised against a full-length human CLEC2D protein. |
| Immunogen | CLEC2D (NP_037401.1, 1 a.a. ~ 191 a.a) full-length human protein. |
| Sequence | MHDSNNVEKDITPSELPANPGCLHSKEHSIKATLWRLFFLIMFLTIVCGMVAALSAIRANCHQEPS VCLQAACPESWIGFQRKCFYFSDDTKNWTSSQRFCDSDADLAQVESFQELNLLRYKGPSDH WIGLSREQGQPWKWINGTEWTRQFPILGAGECAYLNDKGASSARHYTERKWICKSDIHV |
| Host | Mouse |
| Reactivity | Human |
| Quality Control Testing | Antibody reactive against mammalian transfected lysate. |
| Storage Buffer | In 1x PBS, pH 7.4 |
| Storage Instruction | Store at -20°C or lower. Aliquot to avoid repeated freezing and thawing. |

Applications

- Western Blot (Transfected lysate)

Western Blot analysis of CLEC2D expression in transfected 293T cell line ([H00029121-T01](#)) by CLEC2D MaxPab polyclonal antibody.

Lane 1: CLEC2D transfected lysate(21.01 KDa).

Lane 2: Non-transfected lysate.

[Protocol Download](#)

Gene Info — CLEC2D

Entrez GeneID [29121](#)

GeneBank Accession# [NM_013269.3](#)

Protein Accession# [NP_037401.1](#)

Gene Name CLEC2D

Gene Alias CLAX, LLT1, OCIL

Gene Description C-type lectin domain family 2, member D

Omim ID [605659](#)

Gene Ontology [Hyperlink](#)

Gene Summary This gene encodes a member of the natural killer cell receptor C-type lectin family. The encoded protein inhibits osteoclast formation and contains a transmembrane domain near the N-terminus as well as the C-type lectin-like extracellular domain. Several alternatively spliced transcript variants have been identified, but the full-length nature of every transcript has not been defined. [provided by RefSeq]

Other Designations C-type lectin related f[C-type lectin superfamily 2, member D]lectin-like NK cell receptor|lectin-like transcript 1|osteoclast inhibitory lectin

Disease

- [Addison Disease](#)
- [Genetic Predisposition to Disease](#)
- [Osteoporosis](#)