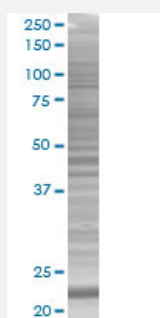


# PYCARD 293T Cell Transient Overexpression Lysate(Denatured)

Catalog # H00029108-T02

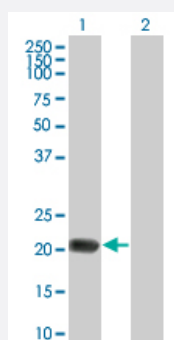
Size 100 uL

## Applications



### SDS-PAGE Gel

PYCARD transfected lysate.



### Western Blot

Lane 1: PYCARD transfected lysate ( 16.5 KDa)

Lane 2: Non-transfected lysate.

## Specification

Transfected Cell Line	293T
Plasmid	pCMV-PYCARD full-length
Host	Human
Theoretical MW (kDa)	21.56
Interspecies Antigen Sequence	Mouse (71); Rat (69)

**Quality Control Testing**

Transient overexpression cell lysate was tested with Anti-PYCARD antibody ([H00029108-B02](#)) by Western Blots.  
SDS-PAGE Gel  
PYCARD transfected lysate.  
Western Blot  
Lane 1: PYCARD transfected lysate ( 16.5 KDa)  
Lane 2: Non-transfected lysate.

**Storage Buffer**

1X Sample Buffer (50 mM Tris-HCl, 2% SDS, 10% glycerol, 300 mM 2-mercaptoethanol, 0.01% Bromophenol blue)

**Storage Instruction**

Store at -80°C. Aliquot to avoid repeated freezing and thawing.

## Applications

- Western Blot

## Gene Info — PYCARD

**Entrez GeneID**

[29108](#)

**GeneBank Accession#**

[NM\\_013258](#)

**Protein Accession#**

[NP\\_037390](#)

**Gene Name**

PYCARD

**Gene Alias**

ASC, CARD5, MGC10332, TMS, TMS-1, TMS1

**Gene Description**

PYD and CARD domain containing

**Omim ID**

[606838](#)

**Gene Ontology**

[Hyperlink](#)

**Gene Summary**

This gene encodes an adaptor protein that is composed of two protein-protein interaction domains: a N-terminal PYRIN-PAAD-DAPIN domain (PYD) and a C-terminal caspase-recruitment domain (CARD). The PYD and CARD domains are members of the six-helix bundle death domain-fold superfamily that mediates assembly of large signaling complexes in the inflammatory and apoptotic signaling pathways via the activation of caspase. In normal cells, this protein is localized to the cytoplasm; however, in cells undergoing apoptosis, it forms ball-like aggregates near the nuclear periphery. Two transcript variants encoding different isoforms have been found for this gene. [provided by RefSeq]

**Other Designations**

apoptosis-associated speck-like protein containing a CARD|caspase recruitment domain protein 5|target of methylation-induced silencing-1

## Disease

- [Arthritis](#)
- [Genetic Predisposition to Disease](#)