

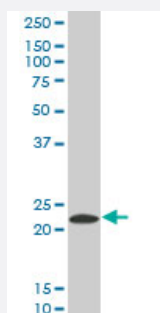
MaxPab®

# PYCARD purified MaxPab mouse polyclonal antibody (B01P)

Catalog # H00029108-B01P

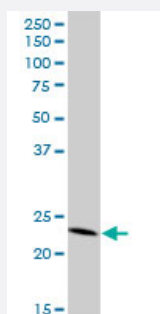
Size 50 ug

## Applications



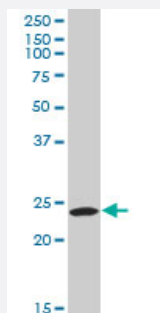
### Western Blot (Tissue lysate)

PYCARD MaxPab polyclonal antibody. Western Blot analysis of PYCARD expression in human spleen.



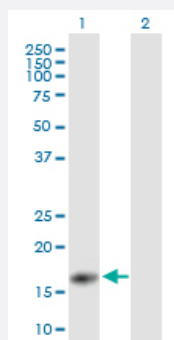
### Western Blot (Tissue lysate)

PYCARD MaxPab polyclonal antibody. Western Blot analysis of PYCARD expression in human kidney.



### Western Blot (Cell lysate)

PYCARD MaxPab polyclonal antibody. Western Blot analysis of PYCARD expression in MCF-7.



## Western Blot (Transfected lysate)

Western Blot analysis of PYCARD expression in transfected 293T cell line ([H00029108-T01](#)) by PYCARD MaxPab polyclonal antibody.

Lane 1: PYCARD transfected lysate(16.5 KDa).

Lane 2: Non-transfected lysate.

## Specification

<b>Product Description</b>	Mouse polyclonal antibody raised against a full-length human PYCARD protein.
<b>Immunogen</b>	PYCARD (AAH13569, 1 a.a. ~ 149 a.a) full-length human protein.
<b>Sequence</b>	MDALDLTDKLVSFYLETYGAELTANVLRDMGLQEMAGQLQAATHQGSGAAPAGIQAPPQSAAKP GLHFIDQHRAALIARVTNVEWLLDALYGKVLTDQYQAVRAEPTNPSKMRKLFNFTPAWNWTCKD LLLQALRESQSYLEDLERS
<b>Host</b>	Mouse
<b>Reactivity</b>	Human
<b>Interspecies Antigen Sequence</b>	Mouse (71); Rat (69)
<b>Quality Control Testing</b>	Antibody reactive against mammalian transfected lysate.
<b>Storage Buffer</b>	In 1x PBS, pH 7.4
<b>Storage Instruction</b>	Store at -20°C or lower. Aliquot to avoid repeated freezing and thawing.

## Applications

- Western Blot (Tissue lysate)

PYCARD MaxPab polyclonal antibody. Western Blot analysis of PYCARD expression in human spleen.

[Protocol Download](#)

- Western Blot (Tissue lysate)

PYCARD MaxPab polyclonal antibody. Western Blot analysis of PYCARD expression in human kidney.

[Protocol Download](#)

- Western Blot (Cell lysate)

PYCARD MaxPab polyclonal antibody. Western Blot analysis of PYCARD expression in MCF-7.

[Protocol Download](#)

- Western Blot (Transfected lysate)

Western Blot analysis of PYCARD expression in transfected 293T cell line ([H00029108-T01](#)) by PYCARD MaxPab polyclonal antibody.

Lane 1: PYCARD transfected lysate(16.5 KDa).

Lane 2: Non-transfected lysate.

[Protocol Download](#)

## Gene Info — PYCARD

Entrez GeneID [29108](#)

GeneBank Accession# [BC013569](#)

Protein Accession# [-](#)

Gene Name PYCARD

Gene Alias ASC, CARD5, MGC10332, TMS, TMS-1, TMS1

Gene Description PYD and CARD domain containing

Omim ID [606838](#)

Gene Ontology [Hyperlink](#)

**Gene Summary** This gene encodes an adaptor protein that is composed of two protein-protein interaction domain s: a N-terminal PYRIN-PAAD-DAPIN domain (PYD) and a C-terminal caspase-recruitment domain (CARD). The PYD and CARD domains are members of the six-helix bundle death domain-fold superfamily that mediates assembly of large signaling complexes in the inflammatory and apoptotic signaling pathways via the activation of caspase. In normal cells, this protein is localized to the cytoplasm; however, in cells undergoing apoptosis, it forms ball-like aggregates near the nuclear periphery. Two transcript variants encoding different isoforms have been found for this gene. [provided by RefSeq]

**Other Designations** apoptosis-associated speck-like protein containing a CARD|caspase recruitment domain protein 5|target of methylation-induced silencing-1

## Disease

- [Arthritis](#)
- [Genetic Predisposition to Disease](#)