

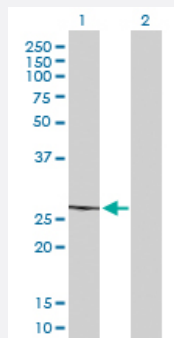
MaxPab®

MRPL22 purified MaxPab mouse polyclonal antibody (B01P)

Catalog # H00029093-B01P

Size 50 ug

Applications



Western Blot (Transfected lysate)

Western Blot analysis of MRPL22 expression in transfected 293T cell line ([H00029093-T01](#)) by MRPL22 MaxPab polyclonal antibody.

Lane 1: MRPL22 transfected lysate(22.77 KDa).

Lane 2: Non-transfected lysate.

Specification

Product Description	Mouse polyclonal antibody raised against a full-length human MRPL22 protein.
Immunogen	MRPL22 (AAH12565, 1 a.a. ~ 206 a.a) full-length human protein.
Sequence	MAAAVLGQLGALWIHNLRSRGKLALGVLPQSYHTSASLDIRKWEKKNKIVYPPQLPGEPRRPAEI YHCRRQIKYSKDKMWYLAKLIRGMSIDQALAQLEFNDKKGAKIIEVLLEAQDMAVRDHNVEFRSN LYAESTSGRGQCLKRIRYHGRGRFGIMEKVYCHYFVKLVEGPPPPPEPPKTAVAHAKECIQQLRS RTIVHTL
Host	Mouse
Reactivity	Human
Interspecies Antigen Sequence	Mouse (89); Rat (89)
Quality Control Testing	Antibody reactive against mammalian transfected lysate.
Storage Buffer	In 1x PBS, pH 7.4
Storage Instruction	Store at -20°C or lower. Aliquot to avoid repeated freezing and thawing.

Applications

- Western Blot (Transfected lysate)

Western Blot analysis of MRPL22 expression in transfected 293T cell line ([H00029093-T01](#)) by MRPL22 MaxPab polyclonal antibody.

Lane 1: MRPL22 transfected lysate(22.77 KDa).

Lane 2: Non-transfected lysate.

[Protocol Download](#)

Gene Info — MRPL22

Entrez GeneID [29093](#)

GeneBank Accession# [BC012565](#)

Protein Accession# [AAH12565](#)

Gene Name MRPL22

Gene Alias DKFZp781F1071, HSPC158, L22mt, MRP-L22, MRP-L25, RPML25

Gene Description mitochondrial ribosomal protein L22

Gene Ontology [Hyperlink](#)

Gene Summary

Mammalian mitochondrial ribosomal proteins are encoded by nuclear genes and help in protein synthesis within the mitochondrion. Mitochondrial ribosomes (mitoribosomes) consist of a small 28 S subunit and a large 39S subunit. They have an estimated 75% protein to rRNA composition compared to prokaryotic ribosomes, where this ratio is reversed. Another difference between mammalian mitoribosomes and prokaryotic ribosomes is that the latter contain a 5S rRNA. Among different species, the proteins comprising the mitoribosome differ greatly in sequence, and sometimes in biochemical properties, which prevents easy recognition by sequence homology. This gene encodes a 39S subunit protein that belongs to the L22 ribosomal protein family. A pseudogene corresponding to this gene is found on chromosome 4q. Two transcript variants encoding different isoforms have been found for this gene. [provided by RefSeq]

Other Designations 39S ribosomal protein L22, mitochondrial

Disease

- [Tobacco Use Disorder](#)