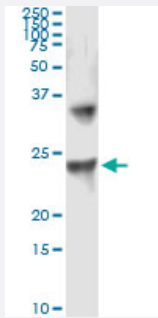


# UBE2T (Human) IP-WB Antibody Pair

Catalog # H00029089-PW1

Size 1 Set

## Applications



Immunoprecipitation of UBE2T transfected lysate using mouse monoclonal anti-UBE2T and Protein A Magnetic Bead ([U0007](#)), and immunoblotted with rabbit polyclonal anti-UBE2T.

## Specification

<b>Product Description</b>	This IP-WB antibody pair set comes with one antibody for immunoprecipitation and another to detect the precipitated protein in western blot.
<b>Reactivity</b>	Human
<b>Interspecies Antigen Sequence</b>	Mouse (85); Rat (82)
<b>Quality Control Testing</b>	Immunoprecipitation-Western Blot (IP-WB) Immunoprecipitation of UBE2T transfected lysate using mouse monoclonal anti-UBE2T and Protein A Magnetic Bead ( <a href="#">U0007</a> ), and immunoblotted with rabbit polyclonal anti-UBE2T.
<b>Supplied Product</b>	Antibody pair set content: 1. Antibody pair for IP: mouse monoclonal anti-UBE2T (300 ug) 2. Antibody pair for WB: rabbit polyclonal anti-UBE2T (50 ul)
<b>Storage Instruction</b>	Store reagents of the antibody pair set at -20°C or lower. Please aliquot to avoid repeated freeze thaw cycle. Reagents should be returned to -20°C storage immediately after use.

## Applications

- Immunoprecipitation-Western Blot

[Protocol Download](#)

## Gene Info — UBE2T

Entrez GeneID	<a href="#">29089</a>
---------------	-----------------------

Gene Name	UBE2T
-----------	-------

Gene Alias	HSPC150, PIG50
------------	----------------

Gene Description	ubiquitin-conjugating enzyme E2T (putative)
------------------	---

Omim ID	<a href="#">610538</a>
---------	------------------------

Gene Ontology	<a href="#">Hyperlink</a>
---------------	---------------------------

Gene Summary	The covalent conjugation of ubiquitin to proteins regulates diverse cellular pathways and proteins. Ubiquitin is transferred to a target protein through a concerted action of a ubiquitin-activating enzyme (E1), a ubiquitin-conjugating enzyme (E2), such as UBE2T, and a ubiquitin ligase (E3) (Machida et al., 2006 [PubMed 16916645]).[supplied by OMIM]
--------------	--

Other Designations	HSPC150 protein similar to ubiquitin-conjugating enzyme OTTHUMP00000038808 ubiquitin conjugating enzyme
--------------------	---