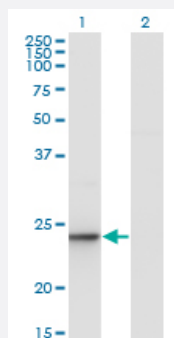


UBE2T monoclonal antibody (M03), clone 2A12-4F11

Catalog # H00029089-M03

Size 100 ug

Applications

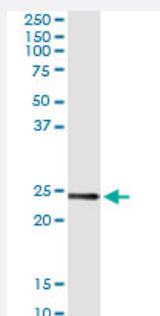


Western Blot (Transfected lysate)

Western Blot analysis of UBE2T expression in transfected 293T cell line by UBE2T monoclonal antibody (M03), clone 2A12-4F11.

Lane 1: UBE2T transfected lysate(22.5 KDa).

Lane 2: Non-transfected lysate.



Immunoprecipitation

Immunoprecipitation of UBE2T transfected lysate using anti-UBE2T monoclonal antibody and Protein A Magnetic Bead, and immunoblotted with UBE2T MaxPab rabbit polyclonal antibody.



Western Blot detection against Immunogen (47.41 KDa) .

Specification

Product Description

Mouse monoclonal antibody raised against a full-length recombinant UBE2T.

Immunogen	UBE2T (AAH04152, 1 a.a. ~ 197 a.a) full-length recombinant protein with GST tag. MW of the GST tag alone is 26 KDa.
Sequence	MQRASRLKRELHMLATEPPPGITCWQDKDQMDDLRAQILGGANTPYEKGVFKLEVIIPERYPFEP PQIRFLTPYHPNIDSAGRICLDVLKLPPKGAWRPSLNATVLTISIQLLMSEPNPDDPLMADISSEFKY NKPAFLKNARQWTEKHARQKQKADEEEMLDNLPEAGDSRVHNSTQKRKASQLVGIEKKFHPDV
Host	Mouse
Reactivity	Human
Interspecies Antigen Sequence	Mouse (85); Rat (82)
Isotype	IgG1 Kappa
Quality Control Testing	Antibody Reactive Against Recombinant Protein. Western Blot detection against Immunogen (47.41 KDa) .
Storage Buffer	In 1x PBS, pH 7.4
Storage Instruction	Store at -20°C or lower. Aliquot to avoid repeated freezing and thawing.

Applications

- Western Blot (Transfected lysate)

Western Blot analysis of UBE2T expression in transfected 293T cell line by UBE2T monoclonal antibody (M03), clone 2A12-4F11.

Lane 1: UBE2T transfected lysate(22.5 KDa).

Lane 2: Non-transfected lysate.

[Protocol Download](#)

- Western Blot (Recombinant protein)

[Protocol Download](#)

- Immunoprecipitation

Immunoprecipitation of UBE2T transfected lysate using anti-UBE2T monoclonal antibody and Protein A Magnetic Bead, and immunoblotted with UBE2T MaxPab rabbit polyclonal antibody.

[Protocol Download](#)

- ELISA

Gene Info — UBE2T

Entrez GeneID [29089](#)**GeneBank Accession#** [BC004152](#)**Protein Accession#** [AAH04152](#)**Gene Name** UBE2T**Gene Alias** HSPC150, PIG50**Gene Description** ubiquitin-conjugating enzyme E2T (putative)**Omim ID** [610538](#)**Gene Ontology** [Hyperlink](#)

Gene Summary The covalent conjugation of ubiquitin to proteins regulates diverse cellular pathways and proteins. Ubiquitin is transferred to a target protein through a concerted action of a ubiquitin-activating enzyme (E1), a ubiquitin-conjugating enzyme (E2), such as UBE2T, and a ubiquitin ligase (E3) (Machida et al., 2006 [PubMed 16916645]).[supplied by OMIM]

Other Designations HSPC150 protein similar to ubiquitin-conjugating enzyme|OTTHUMP00000038808|ubiquitin conjugating enzyme