

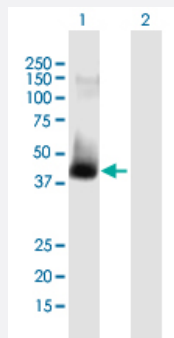
MaxPab®

# ATAD2 purified MaxPab mouse polyclonal antibody (B01P)

Catalog # H00029028-B01P

Size 50 ug

## Applications

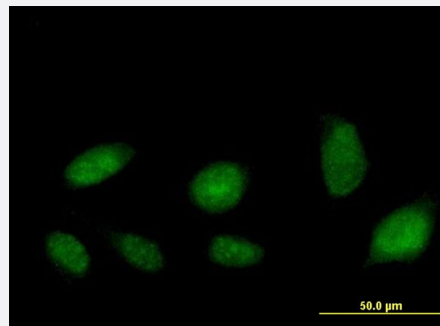


### Western Blot (Transfected lysate)

Western Blot analysis of ATAD2 expression in transfected 293T cell line ([H00029028-T01](#)) by ATAD2 MaxPab polyclonal antibody.

Lane 1: ATAD2 transfected lysate(39.82 KDa).

Lane 2: Non-transfected lysate.



### Immunofluorescence

Immunofluorescence of purified MaxPab antibody to ATAD2 on HeLa cell. [antibody concentration 10 ug/ml]

## Specification

### Product Description

Mouse polyclonal antibody raised against a full-length human ATAD2 protein.

### Immunogen

ATAD2 (AAH19909.1, 1 a.a. ~ 362 a.a) full-length human protein.

### Sequence

MDLSSVISKIDLHKYLTVDYLRDIDLCSNALEYNPDRDPGDRLIRHRACALRDTAYAIKEELDEDF  
EQLCEEIQESRKKRGCSSESKYAPSYHVMPKQNSTLVGDKRSDPEQNEKLKTPSTPVACSTPAQ  
LKRKIRKKSNNWYLGTIKKRRKISQAKDDSQNAIDHKIESDTEETQDTSVDHNETGNTGESSVEENE  
KQQNASESKLELRNNSNTCNIELEDSRKTACTELRDKIACNGDASSSQIHHISDENEGKEMCV  
LRMTRARRSQVEQQQLITVEKALAILSQPTPSLVVDHERLKNLLKTVVKKSQNYNIFQLENLYAVIS  
QCIYRHRKDHDKTSLIQKMEQEVENFSCSR

### Host

Mouse

Reactivity	Human
Interspecies Antigen Sequence	Mouse (76); Rat (77)
Quality Control Testing	Antibody reactive against mammalian transfected lysate.
Storage Buffer	In 1x PBS, pH 7.4
Storage Instruction	Store at -20°C or lower. Aliquot to avoid repeated freezing and thawing.

## Applications

- Western Blot (Transfected lysate)

Western Blot analysis of ATAD2 expression in transfected 293T cell line ([H00029028-T01](#)) by ATAD2 MaxPab polyclonal antibody.

Lane 1: ATAD2 transfected lysate(39.82 KDa).

Lane 2: Non-transfected lysate.

[Protocol Download](#)

- Immunofluorescence

Immunofluorescence of purified MaxPab antibody to ATAD2 on HeLa cell. [antibody concentration 10 ug/ml]

## Gene Info — ATAD2

Entrez GeneID	<a href="#">29028</a>
GeneBank Accession#	<a href="#">BC019909.1</a>
Protein Accession#	<a href="#">AAH19909.1</a>
Gene Name	ATAD2
Gene Alias	ANCCA, DKFZp667N1320, MGC131938, MGC142216, MGC29843, MGC5254, PRO2000
Gene Description	ATPase family, AAA domain containing 2
Gene Ontology	<a href="#">Hyperlink</a>

**Gene Summary**

A large family of ATPases has been described, whose key feature is that they share a conserved region of about 220 amino acids that contains an ATP-binding site. The proteins that belong to this family either contain one or two AAA (ATPases Associated with diverse cellular Activities) domains. AAA family proteins often perform chaperone-like functions that assist in the assembly, operation, or disassembly of protein complexes. The protein encoded by this gene contains two AAA domains, as well as a bromodomain. [provided by RefSeq]

**Other Designations**

-