

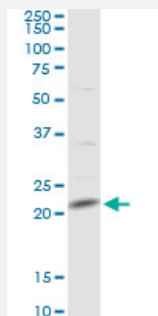
MaxPab®

MRPL13 purified MaxPab rabbit polyclonal antibody (D01P)

Catalog # H00028998-D01P

Size 100 ug

Applications



Western Blot (Tissue lysate)

MRPL13 MaxPab rabbit polyclonal antibody. Western Blot analysis of MRPL13 expression in human kidney.

Specification

Product Description	Rabbit polyclonal antibody raised against a full-length human MRPL13 protein.
Immunogen	MRPL13 (NP_054797.2, 1 a.a. ~ 178 a.a) full-length human protein.
Sequence	MSSFSRAPQQWATFARWYLLDGKMQPPGKLAAMASIRLQGLHKPVYHALSDCGDHVVIMNTRHIAFSGNKWEQKVYSSHTGYGGFRQVTAACLHLRDPVAMKLAYGMLPKNLHRRRTMMERLHLFPDEYIPEDILKNLVEELPQPRKIPKRLDEYTQEEIDAFRLWTPPEDYRL
Host	Rabbit
Reactivity	Human
Interspecies Antigen Sequence	Mouse (89); Rat (89)
Quality Control Testing	Antibody reactive against mammalian transfected lysate.
Storage Buffer	In 1x PBS, pH 7.4
Storage Instruction	Store at -20°C or lower. Aliquot to avoid repeated freezing and thawing.

Applications

- Western Blot (Tissue lysate)

MRPL13 MaxPab rabbit polyclonal antibody. Western Blot analysis of MRPL13 expression in human kidney.

[Protocol Download](#)

Gene Info — MRPL13

Entrez GeneID [28998](#)

GeneBank Accession# [NM_014078.4](#)

Protein Accession# [NP_054797.2](#)

Gene Name MRPL13

Gene Alias L13, L13A, L13mt, RPL13, RPML13

Gene Description mitochondrial ribosomal protein L13

Omim ID [610200](#)

Gene Ontology [Hyperlink](#)

Gene Summary Mammalian mitochondrial ribosomal proteins are encoded by nuclear genes and help in protein synthesis within the mitochondrion. Mitochondrial ribosomes (mitoribosomes) consist of a small 28 S subunit and a large 39S subunit. They have an estimated 75% protein to rRNA composition compared to prokaryotic ribosomes, where this ratio is reversed. Another difference between mammalian mitoribosomes and prokaryotic ribosomes is that the latter contain a 5S rRNA. Among different species, the proteins comprising the mitoribosome differ greatly in sequence, and sometimes in biochemical properties, which prevents easy recognition by sequence homology. This gene encodes a 39S subunit protein. [provided by RefSeq]

Other Designations -

Pathway

- [Ribosome](#)