

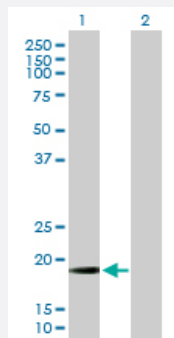
MaxPab®

# MRPL13 MaxPab mouse polyclonal antibody (B01)

Catalog # H00028998-B01

Size 50 uL

## Applications



### Western Blot (Transfected lysate)

Western Blot analysis of MRPL13 expression in transfected 293T cell line ([H00028998-T01](#)) by MRPL13 MaxPab polyclonal antibody.

Lane 1: MRPL13 transfected lysate(19.58 KDa).

Lane 2: Non-transfected lysate.

## Specification

Product Description	Mouse polyclonal antibody raised against a full-length human MRPL13 protein.
Immunogen	MRPL13 (NP_054797.2, 1 a.a. ~ 178 a.a) full-length human protein.
Sequence	MSSFSRAPQQWATFARWYLLDGKMQPPGKLAAMASIRLQGLHKPVYHALSDCGDHVVIMNTRHI AFSGNKWEQKVYSSHTGYPPGFRQVTAAQLHLRDPVAVKLAIFYGMLPKNLHRRRTMMERLHLFPD EYIPEDILKNLVEELPQPRKIPKRLDEYTQEEIDAFPRLLWTPPEDYRL
Host	Mouse
Reactivity	Human
Interspecies Antigen Sequence	Mouse (89); Rat (89)
Quality Control Testing	Antibody reactive against mammalian transfected lysate.
Storage Buffer	No additive
Storage Instruction	Store at -20°C or lower. Aliquot to avoid repeated freezing and thawing.
Note	For IHC and IF applications, antibody purification with Protein A will be needed prior to use.

## Applications

- Western Blot (Transfected lysate)

Western Blot analysis of MRPL13 expression in transfected 293T cell line ([H00028998-T01](#)) by MRPL13 MaxPab polyclonal antibody.

Lane 1: MRPL13 transfected lysate(19.58 KDa).

Lane 2: Non-transfected lysate.

[Protocol Download](#)

## Gene Info — MRPL13

Entrez GeneID	<a href="#">28998</a>
---------------	-----------------------

GeneBank Accession#	<a href="#">NM_014078.4</a>
---------------------	-----------------------------

Protein Accession#	<a href="#">NP_054797.2</a>
--------------------	-----------------------------

Gene Name	MRPL13
-----------	--------

Gene Alias	L13, L13A, L13mt, RPL13, RPML13
------------	---------------------------------

Gene Description	mitochondrial ribosomal protein L13
------------------	-------------------------------------

Omim ID	<a href="#">610200</a>
---------	------------------------

Gene Ontology	<a href="#">Hyperlink</a>
---------------	---------------------------

Gene Summary	Mammalian mitochondrial ribosomal proteins are encoded by nuclear genes and help in protein synthesis within the mitochondrion. Mitochondrial ribosomes (mitoribosomes) consist of a small 28 S subunit and a large 39S subunit. They have an estimated 75% protein to rRNA composition compared to prokaryotic ribosomes, where this ratio is reversed. Another difference between mammalian mitoribosomes and prokaryotic ribosomes is that the latter contain a 5S rRNA. Among different species, the proteins comprising the mitoribosome differ greatly in sequence, and sometimes in biochemical properties, which prevents easy recognition by sequence homology. This gene encodes a 39S subunit protein. [provided by RefSeq]
--------------	--

Other Designations	-
--------------------	---

## Publication Reference

- [NONO and RALY proteins are required for YB-1 oxaliplatin induced resistance in colon adenocarcinoma cell lines.](#)

Tsofack SP, Garand C, Sereduk C, Chow D, Aziz M, Guay D, Yin HH, Lebel M.

Molecular Cancer 2011 Nov; 10:145.

Application: WB, Human, SW480, HT29 cells

## Pathway

- [Ribosome](#)