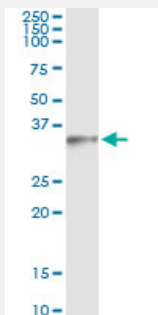


MAGEH1 (Human) IP-WB Antibody Pair

Catalog # H00028986-PW2

Size 1 Set

Applications



Immunoprecipitation of MAGEH1 transfected lysate using mouse monoclonal anti-MAGEH1 and Protein A Magnetic Bead ([U0007](#)), and immunoblotted with rabbit polyclonal anti-MAGEH1.

Specification

Product Description	This IP-WB antibody pair set comes with one antibody for immunoprecipitation and another to detect the precipitated protein in western blot.
Reactivity	Human
Interspecies Antigen Sequence	Mouse (92); Rat (92)
Quality Control Testing	Immunoprecipitation-Western Blot (IP-WB) Immunoprecipitation of MAGEH1 transfected lysate using mouse monoclonal anti-MAGEH1 and Protein A Magnetic Bead (U0007), and immunoblotted with rabbit polyclonal anti-MAGEH1.
Supplied Product	Antibody pair set content: 1. Antibody pair for IP: mouse monoclonal anti-MAGEH1 (300 ug) 2. Antibody pair for WB: rabbit polyclonal anti-MAGEH1 (50 ul)
Storage Instruction	Store reagents of the antibody pair set at -20°C or lower. Please aliquot to avoid repeated freeze thaw cycle. Reagents should be returned to -20°C storage immediately after use.

Applications

- Immunoprecipitation-Western Blot

[Protocol Download](#)

Gene Info — MAGEH1

Entrez GeneID	28986
Gene Name	MAGEH1
Gene Alias	APR-1, APR1, MAGEH
Gene Description	melanoma antigen family H, 1
Omim ID	300548
Gene Ontology	Hyperlink
Gene Summary	This gene is thought to be involved in apoptosis. Multiple polyadenylation sites have been found for this gene. [provided by RefSeq]
Other Designations	MAGE-H1 antigen melanoma antigen, family H, 1 protein melanoma-associated antigen H1 restin