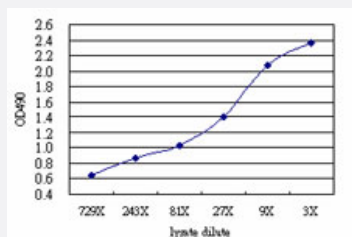


MAGEH1 (Human) Matched Antibody Pair

Catalog # H00028986-AP51

Size 1 Set

Applications



Sandwich ELISA detection sensitivity ranging from approximately 729x to 3x dilution of the MAGEH1 293T overexpression lysate (non-denatured).

Specification

Product Description	This antibody pair set comes with a matched antibody pair to detect and quantify the protein level of human MAGEH1.
Reactivity	Human
Interspecies Antigen Sequence	Mouse (92); Rat (92)
Quality Control Testing	Standard curve using MAGEH1 293T overexpression lysate (non-denatured) as an analyte. Sandwich ELISA detection sensitivity ranging from approximately 729x to 3x dilution of the MAGEH1 293T overexpression lysate (non-denatured).
Supplied Product	Antibody pair set content: 1. Capture antibody: mouse monoclonal anti-MAGEH1 (100 ug) 2. Detection antibody: rabbit purified polyclonal anti-MAGEH1 (50 ug) *Reagents are sufficient for at least 3-5 x 96 well plates using recommended protocols.
Storage Instruction	Store reagents of the antibody pair set at -20°C or lower. Please aliquot to avoid repeated freeze thaw cycle. Reagents should be returned to -20°C storage immediately after use.

Applications

- ELISA Pair (Transfected lysate)

[Protocol Download](#)

Gene Info — MAGEH1

Entrez GeneID	28986
---------------	-----------------------

Gene Name	MAGEH1
-----------	--------

Gene Alias	APR-1, APR1, MAGEH
------------	--------------------

Gene Description	melanoma antigen family H, 1
------------------	------------------------------

Omim ID	300548
---------	------------------------

Gene Ontology	Hyperlink
---------------	---------------------------

Gene Summary	This gene is thought to be involved in apoptosis. Multiple polyadenylation sites have been found for this gene. [provided by RefSeq]
--------------	--

Other Designations	MAGE-H1 antigen melanoma antigen, family H, 1 protein melanoma-associated antigen H1 restin
--------------------	---