

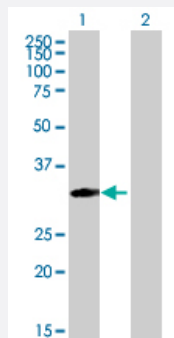
MaxPab®

MRPS18B purified MaxPab mouse polyclonal antibody (B01P)

Catalog # H00028973-B01P

Size 50 ug

Applications



Western Blot (Transfected lysate)

Western Blot analysis of MRPS18B expression in transfected 293T cell line ([H00028973-T01](#)) by MRPS18B MaxPab polyclonal antibody.

Lane 1: MRPS18B transfected lysate(28.49 KDa).

Lane 2: Non-transfected lysate.

Specification

Product Description	Mouse polyclonal antibody raised against a full-length human MRPS18B protein.
Immunogen	MRPS18B (AAH05373, 1 a.a. ~ 258 a.a) full-length human protein.
Sequence	MAASVLNTVLRRLPMLSLFRGSHRVQVPLQLCTKAPSEEDSLSSVPISPYKDEPWKYLESEEEYQ ERYGSRPVWADYRRNHKGGVPPQTRKTCIRRNKVVGNPCICRDHKLHVDFRNVKLLQFVCA HTGIIFYAPYTGVCVKQHKRLTQAIQKARDHGLLMHIPQVEPRDLDFSTSHGAVSATPPAPTLVSSD PWYPWYNWKQPPERELSRLRRLYQGHLLQEESGPPPESEMPKMPPTPAEASSTGQTGPQSAL
Host	Mouse
Reactivity	Human
Interspecies Antigen Sequence	Mouse (77); Rat (78)
Quality Control Testing	Antibody reactive against mammalian transfected lysate.
Storage Buffer	In 1x PBS, pH 7.4
Storage Instruction	Store at -20°C or lower. Aliquot to avoid repeated freezing and thawing.

Applications

- Western Blot (Transfected lysate)

Western Blot analysis of MRPS18B expression in transfected 293T cell line ([H00028973-T01](#)) by MRPS18B MaxPab polyclonal antibody.

Lane 1: MRPS18B transfected lysate(28.49 KDa).

Lane 2: Non-transfected lysate.

[Protocol Download](#)

Gene Info — MRPS18B

Entrez GeneID	28973
GeneBank Accession#	BC005373
Protein Accession#	AAH05373
Gene Name	MRPS18B
Gene Alias	C6orf14, DKFZp564H0223, HSPC183, HumanS18a, MRP-S18-2, MRPS18-2, PTD017, S18amt
Gene Description	mitochondrial ribosomal protein S18B
Gene Ontology	Hyperlink
Gene Summary	Mammalian mitochondrial ribosomal proteins are encoded by nuclear genes and help in protein synthesis within the mitochondrion. Mitochondrial ribosomes (mitoribosomes) consist of a small 28S subunit and a large 39S subunit. They have an estimated 75% protein to rRNA composition compared to prokaryotic ribosomes, where this ratio is reversed. Another difference between mammalian mitoribosomes and prokaryotic ribosomes is that the latter contain a 5S rRNA. Among different species, the proteins comprising the mitoribosome differ greatly in sequence, and sometimes in biochemical properties, which prevents easy recognition by sequence homology. This gene encodes a 28S subunit protein that belongs to the ribosomal protein S18P family. The encoded protein is one of three that has significant sequence similarity to bacterial S18 proteins. The primary sequences of the three human mitochondrial S18 proteins are no more closely related to each other than they are to the prokaryotic S18 proteins. Pseudogenes corresponding to this gene are found on chromosomes 1q and 2q. [provided by RefSeq]
Other Designations	OTTHUMP00000029404 mitochondrial ribosomal protein S18-2

Disease

- [Genetic Predisposition to Disease](#)
- [Lupus Erythematosus](#)