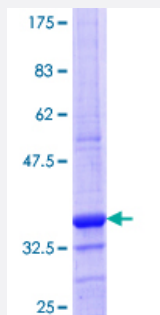


SLC6A16 (Human) Recombinant Protein (Q01)

Catalog # H00028968-Q01

Size 25 ug, 10 ug

Applications



Specification

Product Description	Human SLC6A16 partial ORF (NP_054756.2, 406 a.a. - 492 a.a.) recombinant protein with GST-tag at N-terminal.
Sequence	RCCERNAEILLKLINLGKLPPDAKPPVNLLYNPTSYNAWLSGLPQHKSMLREVTECNIETQFLKASEGPKFAFLSFVEAMSFLP
Host	Wheat Germ (in vitro)
Theoretical MW (kDa)	35.31
Preparation Method	in vitro wheat germ expression system
Purification	Glutathione Sepharose 4 Fast Flow
Quality Control Testing	12.5% SDS-PAGE Stained with Coomassie Blue.
Storage Buffer	50 mM Tris-HCl, 10 mM reduced Glutathione, pH=8.0 in the elution buffer.
Storage Instruction	Store at -80°C. Aliquot to avoid repeated freezing and thawing.
Note	Best use within three months from the date of receipt of this protein.

Applications

- Enzyme-linked Immunoabsorbent Assay
- Western Blot (Recombinant protein)
- Antibody Production
- Protein Array

Gene Info — SLC6A16

Entrez GeneID	28968
GeneBank Accession#	NM_014037
Protein Accession#	NP_054756.2
Gene Name	SLC6A16
Gene Alias	NTT5
Gene Description	solute carrier family 6, member 16
Omim ID	607972
Gene Ontology	Hyperlink
Gene Summary	SLC6A16 shows structural characteristics of an Na(+)- and Cl(-)-dependent neurotransmitter transporter, including 12 transmembrane (TM) domains, intracellular N and C termini, and large extracellular loops containing multiple N-glycosylation sites.[supplied by OMIM]
Other Designations	solute carrier family 6 (neurotransmitter transporter), member 16