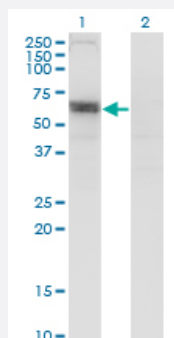


SLC6A16 monoclonal antibody (M13), clone 2E5

Catalog # H00028968-M13

Size 100 ug

Applications

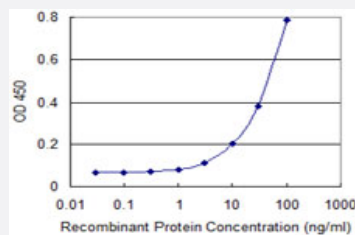


Western Blot (Transfected lysate)

Western Blot analysis of SLC6A16 expression in transfected 293T cell line by SLC6A16 monoclonal antibody (M13), clone 2E5.

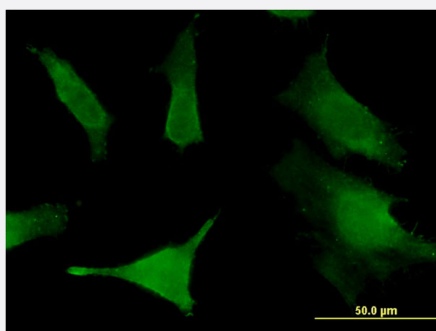
Lane 1: SLC6A16 transfected lysate (Predicted MW: 73.5 KDa).

Lane 2: Non-transfected lysate.



Sandwich ELISA (Recombinant protein)

Detection limit for recombinant GST tagged SLC6A16 is 1 ng/ml as a capture antibody.



Immunofluorescence

Immunofluorescence of monoclonal antibody to SLC6A16 on HeLa cell .
[antibody concentration 10 ug/ml]



Western Blot detection against Immunogen (35.31 KDa) .

Specification

Product Description	Mouse monoclonal antibody raised against a partial recombinant SLC6A16.
Immunogen	SLC6A16 (NP_054756.2, 406 a.a. ~ 492 a.a) partial recombinant protein with GST tag. MW of the GST tag alone is 26 KDa.
Sequence	RCCERNAEILLKLINLGKLPPDAKPPVNLLYNPTSYNAWLGLPQHISKSMVLREVTECNIEQFLKA SEGPKFAFLSFVEAMSFLP
Host	Mouse
Reactivity	Human
Isotype	IgG1 Kappa
Quality Control Testing	Antibody Reactive Against Recombinant Protein. Western Blot detection against Immunogen (35.31 KDa) .
Storage Buffer	In 1x PBS, pH 7.4
Storage Instruction	Store at -20°C or lower. Aliquot to avoid repeated freezing and thawing.

Applications

- Western Blot (Transfected lysate)

Western Blot analysis of SLC6A16 expression in transfected 293T cell line by SLC6A16 monoclonal antibody (M13), clone 2E5.

Lane 1: SLC6A16 transfected lysate (Predicted MW: 73.5 KDa).

Lane 2: Non-transfected lysate.

[Protocol Download](#)

- Western Blot (Recombinant protein)

[Protocol Download](#)

- Sandwich ELISA (Recombinant protein)

Detection limit for recombinant GST tagged SLC6A16 is 1 ng/ml as a capture antibody.

[Protocol Download](#)

- ELISA

- Immunofluorescence

Immunofluorescence of monoclonal antibody to SLC6A16 on HeLa cell . [antibody concentration 10 ug/ml]

Gene Info — SLC6A16

Entrez GeneID	28968
---------------	-----------------------

GeneBank Accession#	NM_014037
---------------------	---------------------------

Protein Accession#	NP_054756.2
--------------------	-----------------------------

Gene Name	SLC6A16
-----------	---------

Gene Alias	NTT5
------------	------

Gene Description	solute carrier family 6, member 16
------------------	------------------------------------

Omim ID	607972
---------	------------------------

Gene Ontology	Hyperlink
---------------	---------------------------

Gene Summary	SLC6A16 shows structural characteristics of an Na(+)- and Cl(-)-dependent neurotransmitter transporter, including 12 transmembrane (TM) domains, intracellular N and C termini, and large extracellular loops containing multiple N-glycosylation sites.[supplied by OMIM]
--------------	--

Other Designations	solute carrier family 6 (neurotransmitter transporter), member 16
--------------------	---